



3010 Gaylord Parkway
Suite 190
Frisco, TX 75034
TEL 972.377.7480
FAX 972.377.8380
www.GarverUSA.com

May 26, 2023

**2306ANDRW - Addendum No. 1
To Plans, Contract Documents and Specifications**

**Andrews County Airport (E11)
Runway 16-34 and Taxiway A Reconstruction
TxDOT CSJ No. 2306ANDRW**

This addendum shall be a part of the Plans, Contract Documents and Specifications to the same extent as though it were originally included therein, and it shall supersede anything contained in the Plans, Contract Documents and Specifications with which it might conflict. Acknowledgement of receipt of this Addendum must be provided on TxDOT Bid Form page 6 of 7 included in the Contract Documents.

The pre-bid meeting minutes have been included along with the sign-in sheet and meeting exhibits. The pre-bid meeting minutes include all questions asked during the pre-bid and the pre-bid site visit.

Bidders must fill out the bid form electronically, print, sign and submit a hardcopy as part of their bid package.

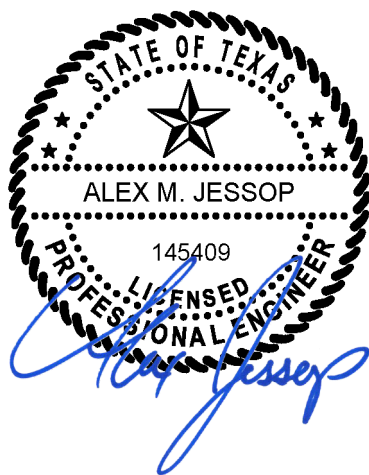
Revisions or additions made to the Contract Documents and Plans:

TxDOT Bid Form for 2306ANDRW

The bid form was updated to include Bid Schedule 2 and Additive Alternate 1.

By: _____

Alex Jessop, P.E.
Project Engineer



Attachments:

Pre-Bid Meeting Minutes
Revised TxDOT Bid Form for 2306ANDRW



3010 Gaylord Parkway
Suite 190
Frisco, TX 75034
TEL 972.377.7480
FAX 972.377.8380
www.GarverUSA.com

MEETING MINUTES

To: Attendees **Date:** May 26, 2023
From: Alex Jessop, PE
RE: Andrews County Airport (E11)
TxDOT CSJ No. 2306ANDRW
Runway 16-34 and Taxiway A Reconstruction – Pre-Bid Meeting

Copies To: Attendees

On Wednesday, May 24, 2023, at 1:00pm, a Pre-Bid meeting was conducted to discuss the Runway 16-34 and Taxiway A Reconstruction project. The following items were discussed:

1) Sign In Sheet Attached

- a) See attached Sign-In Sheet

2) Bidding Procedures

- a) Sealed bids need to be addressed and delivered to Ms. Carol White, County Auditor, Andrews County Courthouse, 201 North Main St. Room 109, Andrews, TX 79714.
- b) Bids will be received until **2:00pm, Tuesday, June 13, 2023**, then publicly opened and read.
 - i. Any bids received after closing time will be returned unopened.
 - ii. The Bid Opening for this project will be held in the Andrews County Town Hall Conference Room at the address listed for sealed bid delivery.
- c) Technical questions concerning the plans and specifications should be directed to Alex Jessop, PE at AMJessop@garverusa.com.
- d) **Contractors shall try to have all questions submitted by 5:00pm on Friday, June 2, 2023. Answers will be provided by 5:00pm on Tuesday, June 6, 2023.**
- e) Bidder Qualifications
 - i. If Contractor is Pre-Qualified with the Texas Department of Transportation, the Contractor shall include the necessary Full Prequalification and Bidder's Questionnaire with the Bid Proposal.
 - ii. If Contractor is not Pre-Qualified, the Contractor shall include the bidder's qualifications per General Provision 20-02, Pre-qualification of Bidder along with the Bid Proposal.
- f) Instructions to bidders
 - i. **Contract Time: 105 Calendar Days (Base Bid Schedule 1 and 2) + 15 Calendar Days (Additive Alternate #1)**
 - ii. \$1,200 Liquidated Damages per day
 - iii. Bid proposals need to be completed electronically via Adobe.
 - iv. Once bid proposals are completed via Adobe, Contractor will need to sign the proposal in ink.
 - v. All addendums need to be acknowledged on the Bid Proposal. Addendums will be posted online through TxDOT.

3) Federal Provisions

- a) The DBE goal is **5.00%**.
- i. DBE Participation Plan to include but not limited to: (no later than 5 calendar days from bid opening):
 - DBE Commitment Agreement Form No. SMS.4901
 - DBE Program Material/Supplier Form No. SMS.4901-MS
 - DBE Trucking Commitment Form No. SMS.4901-T.
 - Please download the appropriate DBE Commitment Agreement or Good faith effort form from the TxDOT website at: <http://www.txdot.gov/business/partnerships/dbe-forms.html> There are three available DBE commitment forms. You must pick which commitment applies to your subcontract agreement. Then you and your DBE/s must complete the form and return it with the signed DBE plan by the required date.
 - Form 4000 Contractor's Certification Good Faith Effort (if unable to meet specified goal)
 - ii. Questions regarding goals and Good Faith Efforts should be directed to Eli Lopez with TxDOT Aviation at (512)-416-4506, eli.lopez@txdot.gov.
 - iii. The Bidder must submit an acceptable DBE plan and commitment or good faith effort not later than 5 calendar days after bid opening as a matter of responsibility, even if the bidder is not the apparent low bidder.
- b) Contractor shall follow all Davis Bacon Wage Rate Requirements.
- c) Contractor shall follow all Buy American clauses.

4) TxDOT General Provisions

- a) General Provisions are provided in a standalone publication entitled General Provisions.
- b) Electronic copies are available on the TxDOT Aviation website.
 - i. <https://www.txdot.gov/inside-txdot/division/aviation/general-provisions.html>
- c) Contractors shall pay close attention to Section 100 in the General Provisions regarding the Contractor Quality Control Program and the Contractor Quality Control Testing.
 - i. The Contractor is required to prepare a Quality Control Program following the specifications where it is required.
 - ii. Owner will perform Quality Assurance (QA) testing on all materials.
 - **Arias & Associates, Inc. is the QA testing laboratory for this project.**
- d) Any failed tests performed by the QA lab will be deducted from the Contractor.

5) Construction Plans

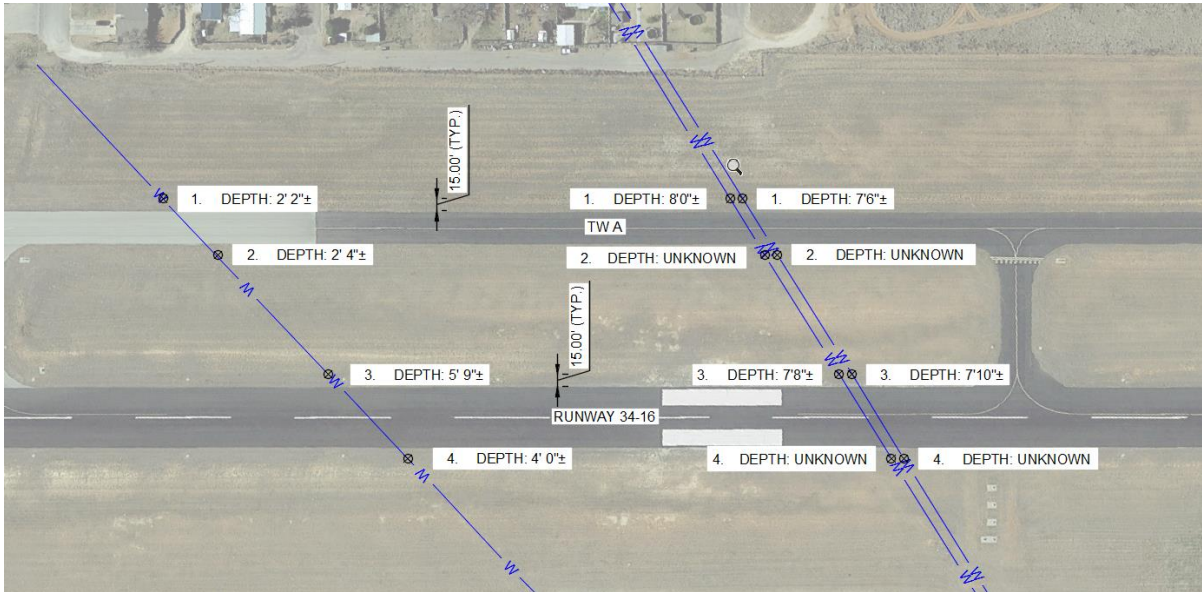
- a) Project Layout
- i. Base Bid Schedule 1
 - Reconstruction of Runway 16-34, Taxiway A, Taxiway B, Taxiway C, and Taxiway H; to include the associated electrical improvements, pavement markings, and pavement edge grading.
 - ii. Base Bid Schedule 2
 - Reconstruction of Taxiway G; to include the associated electrical improvements, pavement markings, and pavement edge grading.
 - iii. Additive Alternate 1
 - Reconstruction of Taxiway D between the intersection of Taxiway A and the apron; to include the associated pavement markings and pavement edge grading.

- b) Safety and Phasing
 - i. Phase 1 (100 Calendar Days)
 - Consists of all reconstruction work associated with Runway 16-34, Taxiway A, Taxiway H, Taxiway C, Taxiway B, and Taxiway G.
 - Construction will commence during a **closure of Runway 16-34 and Runway 11-29.**
 - **Runway 2-20 will remain active.**
 - ii. Phase 2 (15 Calendar Days)
 - Consists of reconstruction work at the intersection of Runway 16-34 and Runway 2-20.
 - Construction will commence during a **closure of Runway 16-34, Runway 11-29, and Runway 2-20.**
 - **During this phase the airport will be closed to all aircraft operations.**
 - iii. Phase 3 (15 Calendar Days)
 - Consists of the reconstruction of Taxiway D between the apron and Taxiway A.
 - iv. Phase 4 (5 Calendar Days)
 - Consists of installing the final pavement markings on all reconstructed pavements.
 - **During this phase the airport will be closed to all aircraft operations.**

6) Pre-Bid Meeting and Site Visit Questions

- a) Are Contractor's required to register in the Department of Homeland Security's E-Verify Program?
 - The E-Verify Program is not required for TxDOT Aviation Projects.
- b) Does the contractor need a badge to access the airport?
 - No badges will be required; however, the contractor will be responsible for maintaining the Airport security protocols during construction.
- c) Can a TxDOT Class P concrete be an acceptable alternate to the P-610 concrete specified for the electrical work?
 - A TxDOT Class P concrete that meets the same compressive strength requirements of P-610 is an acceptable alternate for the P-610 concrete electrical and drainage items.
- d) What kind of aircraft traffic can the contractor expect on a normal daily basis?
 - Expect approximately 5 to 6 aircraft operations per day.
- e) How deep are the waterlines that cross Runway 16-34 and Taxiway A?
 - The contractor shall pothole the waterlines to confirm the depths prior to construction. See the figure below for approximate waterline depths.

TxDOT CSJ No. 2306ANDRW
E11 – Runway 16-34 and Taxiway A Reconstruction
Pre-Bid Meeting Minutes



Attachments: Project Layout Plan
CSPP – Overview
Sign-In

Pages(incl.): 7

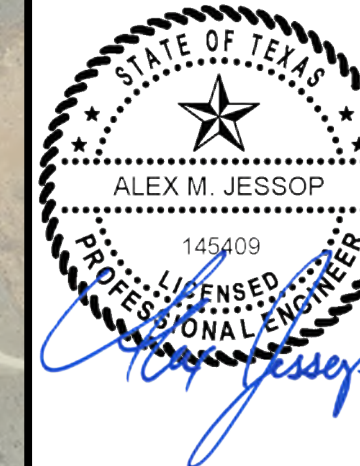
Copy to File: 22A11972

Copies to Garver: AMJ, SLS

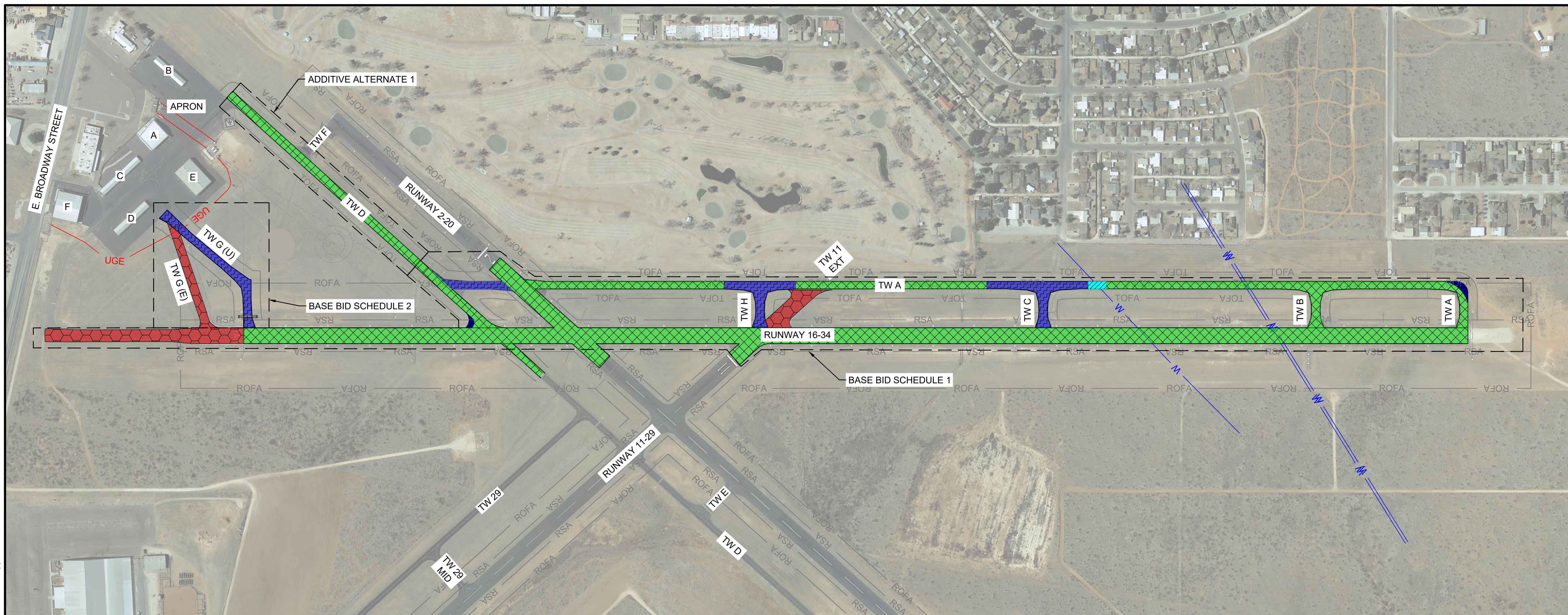
L:\2022\22A11972 - E11 RW 16-34 and TW A Recon\Correspondence\Meetings\Minutes\Prebid Meeting 05-24-2023\22A11972 - E11 RW 16-34 and TW A Recon - PreBid Meeting Minutes - 2023-05-24.docm



© 2023 GARVER, LLC
 THIS DOCUMENT, ALONG WITH THE IDEAS AND DESIGNS CONVEYED HEREIN, SHALL BE CONSIDERED INSTRUMENTS OF PROFESSIONAL SERVICE AND ARE PROPERTY OF GARVER, LLC. ANY USE, REPRODUCTION, OR DISTRIBUTION OF THIS DOCUMENT, ALONG WITH THE IDEAS AND DESIGN CONTAINED HEREIN, IS PROHIBITED UNLESS AUTHORIZED IN WRITING BY GARVER, LLC OR EXPLICITLY ALLOWED IN THE GOVERNING PROFESSIONAL SERVICES AGREEMENT FOR THIS WORK.



Digitally Signed 01/27/2023



REV.	DATE	DESCRIPTION	BY



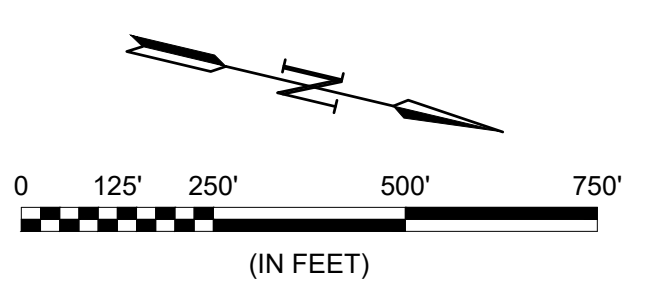
ANDREWS COUNTY AIRPORT ANDREWS, TEXAS
 RUNWAY 16 AND TAXIWAY A RECONSTRUCTION

PROJECT LAYOUT PLAN

JOB NO.: 22A11972
 DATE: JAN 2023
 DESIGNED BY: JAH
 DRAWN BY: JAH

BAR IS ONE INCH ON ORIGINAL DRAWING
 IF NOT ONE INCH ON THIS SHEET, ADJUST SCALES ACCORDINGLY.

DRAWING NUMBER
GI-101
 SHEET NUMBER
3



LEGEND	
	PAVEMENT REMOVAL
	PROPOSED FULL DEPTH RECLAMATION
	PROPOSED NEW CONSTRUCTION
	PROPOSED MILL AND OVERLAY
	RSA RUNWAY SAFETY AREA
	ROFA RUNWAY OBJECT FREE AREA
	TOFA TAXIWAY OBJECT FREE AREA
	UGE UNDERGROUND ELECTRICAL
	W WATERLINE

ITEMS OF WORK	
WORK ITEMS FOR CONSTRUCTION INCLUDE BUT NOT LIMITED TO THE FOLLOWING:	
BASE BID SCHEDULE 1:	
1.	INSTALL BARRICADES, RUNWAY CLOSURE MARKINGS, AND EROSION CONTROL MEASURES.
2.	REMOVE EXISTING ASPHALT PAVEMENT.
3.	CONSTRUCT FULL DEPTH RECLAMATION PAVEMENT SECTION FOR RUNWAY 16-34, RUNWAY 2-20 INTERSECTION, AND TAXIWAY A.
4.	CONSTRUCT NEW PAVEMENT SECTION FOR TAXIWAY H, TAXIWAY C, AND SECTIONS OF TAXIWAY A.
5.	CONSTRUCT PROPOSED EDGE GRADING.
6.	INSTALL PROPOSED RUNWAY THRESHOLD LIGHTS AND GUIDANCE SIGNS.
7.	INSTALL PROPOSED PAVEMENT MARKINGS.
BASE BID SCHEDULE 2:	
1.	REMOVE EXISTING TAXIWAY G ASPHALT PAVEMENT.
4.	CONSTRUCT NEW PAVEMENT SECTION FOR TAXIWAY G.
5.	INSTALL PROPOSED DRAINAGE IMPROVEMENTS.
5.	CONSTRUCT PROPOSED EDGE GRADING.
6.	INSTALL PROPOSED GUIDANCE SIGNS.
7.	INSTALL PROPOSED PAVEMENT MARKINGS.
ADDITIVE ALTERNATE 1:	
1.	CONSTRUCT FULL DEPTH RECLAMATION PAVEMENT SECTION FOR TAXIWAY D.
2.	CONSTRUCT PROPOSED EDGE GRADING.
3.	INSTALL PROPOSED PAVEMENT MARKINGS.

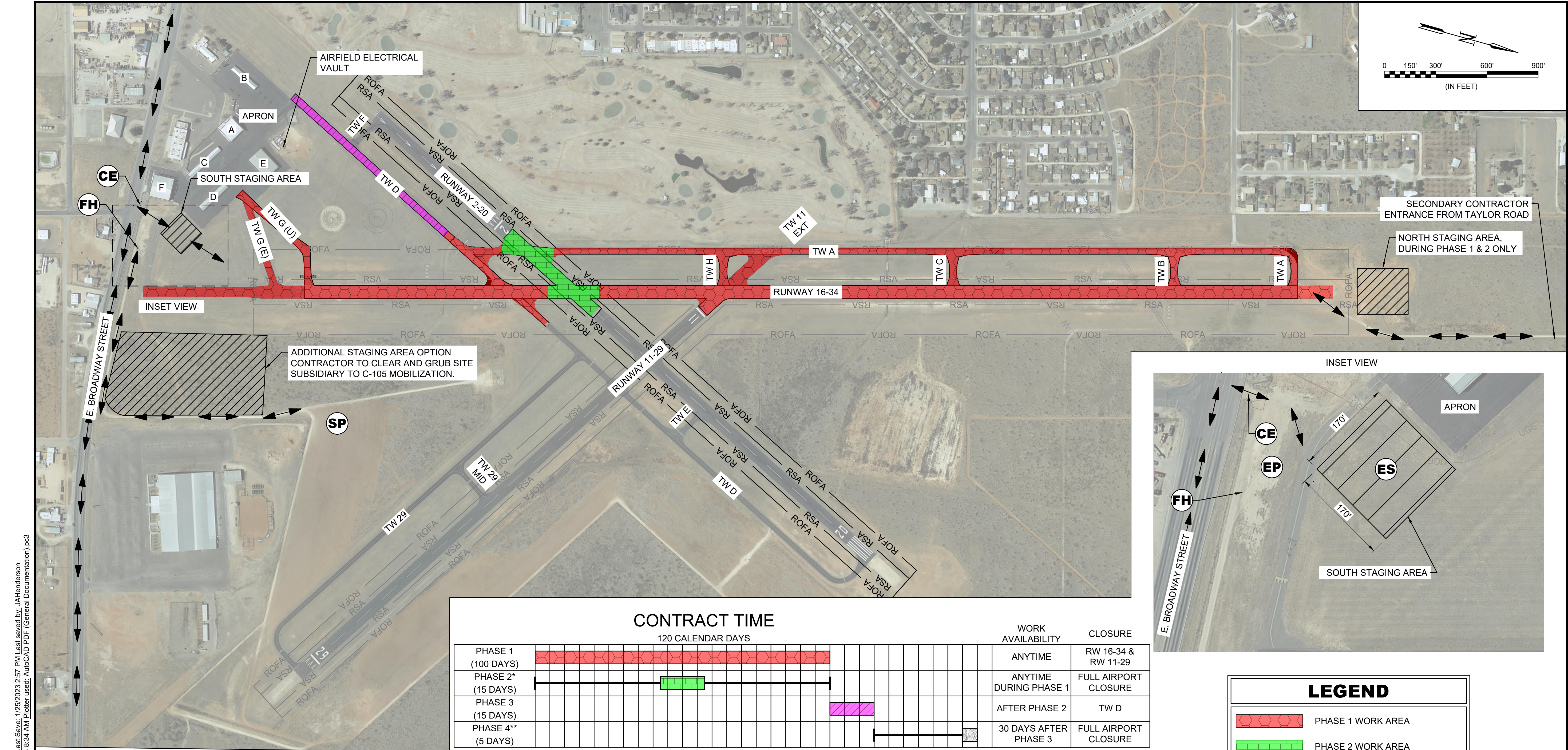
EARTHWORK

DESCRIPTION	BASE BID SCHED 1		BASE BID SCHED 2		ADD ALT 1	
	CUT (C.Y.)	FILL (C.Y.)	CUT (C.Y.)	FILL (C.Y.)	CUT (C.Y.)	FILL (C.Y.)
GRADING UNCLASSIFIED EXCAVATION	6,182	8,994	5,309	1,566	109	207

- EARTHWORK QUANTITY NOTES:**
- SEE SPECIFICATION P-152 FOR MATERIAL, METHOD OF MEASUREMENT AND PAYMENT.
 - SEE SPECIFICATION P-101 FOR PAVEMENT REMOVAL.
 - UNSUITABLE EXCAVATION QUANTITY WAS ESTIMATED BASED ON BORING INFORMATION. CONTRACTOR WILL ONLY BE PAID FOR THIS QUANTITY IF UNSUITABLE MATERIAL IS ENCOUNTERED.

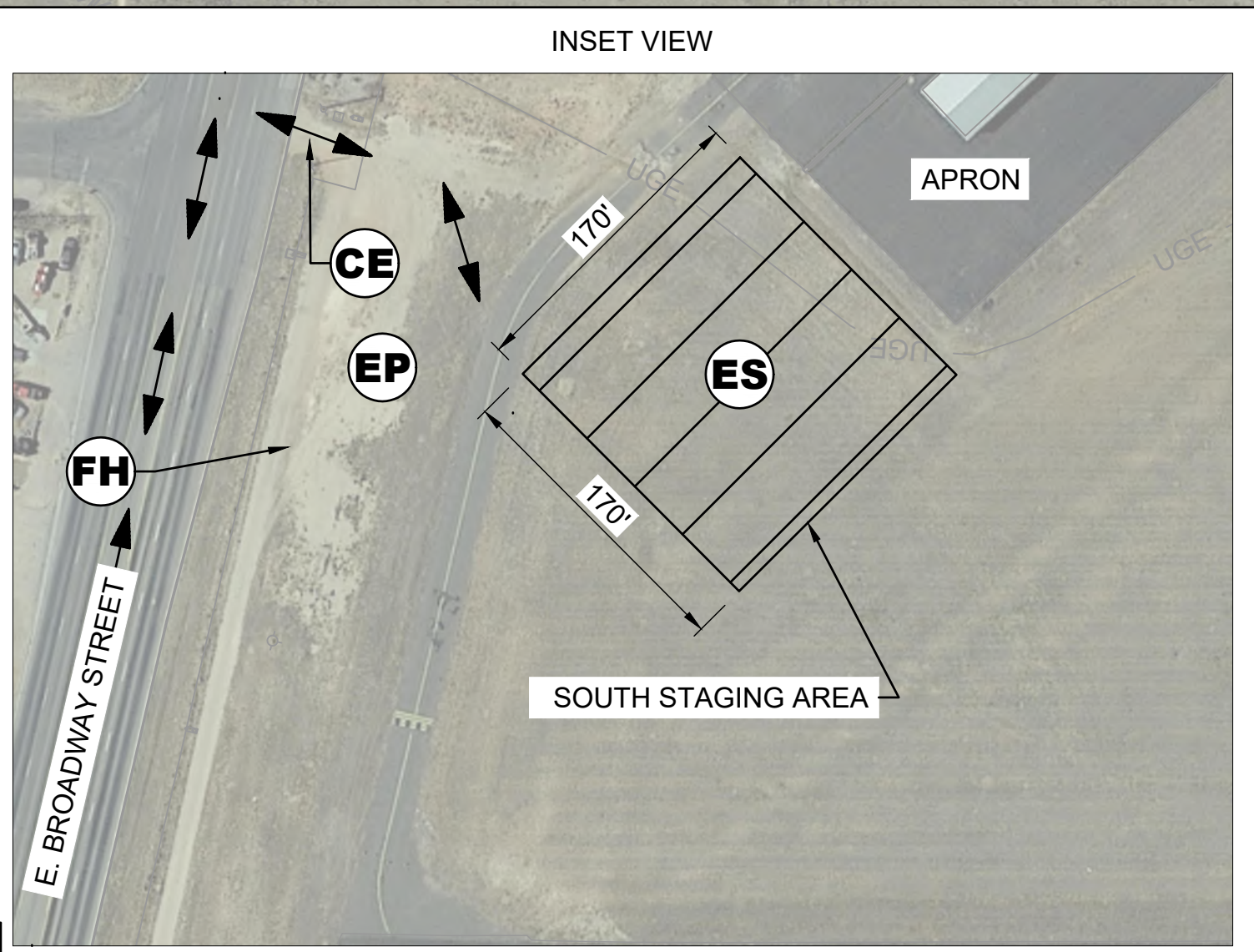
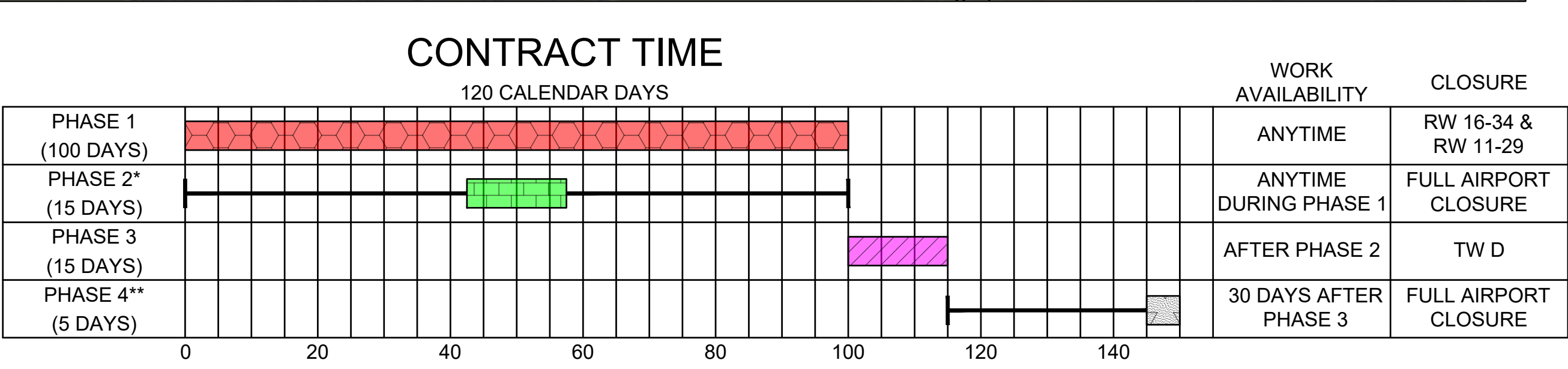
PRINTING NOTE: THIS SHEET SHOULD BE PRINTED IN COLOR

File: L:\2022\22A11972 - E11 RW 16-34 and TW A Recon\Drawings\E11_RW_RHB-GI-101.dwg Last Save: 1/25/2023 4:10 PM Last saved by: JAHenderson
 Last plotted by: Henderson, James_A Plot Style: AECmono.ctb Plot Scale: 1:1 Plot Date: 1/26/2023 8:32 AM Plotter used: AutoCAD PDF (General Documentation).pc3



GARVER
 © 2023 GARVER, LLC
 THIS DOCUMENT, ALONG WITH THE IDEAS AND DESIGNS CONVEYED HEREIN, SHALL BE CONSIDERED INSTRUMENTS OF PROFESSIONAL SERVICE AND ARE PROPERTY OF GARVER, LLC. ANY USE, REPRODUCTION, OR DISTRIBUTION OF THIS DOCUMENT, ALONG WITH THE IDEAS AND DESIGN CONTAINED HEREIN, IS PROHIBITED UNLESS AUTHORIZED IN WRITING BY GARVER, LLC OR EXPLICITLY ALLOWED IN THE GOVERNING PROFESSIONAL SERVICES AGREEMENT FOR THIS WORK.

STATE OF TEXAS
 ALEX M. JESSOP
 145409
 LICENSED PROFESSIONAL ENGINEER
 Digitally Signed 01/27/2023



LEGEND

- PHASE 1 WORK AREA
- PHASE 2 WORK AREA
- PHASE 3 WORK AREA (ADDITIVE ALTERNATE 1)
- RSA — RUNWAY SAFETY AREA
- ROFA — RUNWAY OBJECT FREE AREA
- CONTRACTOR STAGING AREA
- FH FIRE HYDRANT
- CE CONSTRUCTION ENTRANCE
- SP STOCKPILE
- EP EMPLOYEE PARKING
- ES EQUIPMENT STORAGE
- ← → CONTRACTOR ROUTE

SEQUENCE OF CONSTRUCTION

- 1 FULL DEPTH RECLAMATION RECONSTRUCTION OF RUNWAY 16-34, TAXIWAY A, B, C, AND THE INTERSECTIONS OF RUNWAY 11-29 AND TAXIWAY D. REMOVAL OF THE EXISTING TAXIWAY G, RUNWAY 11 EXTENSION, AND RUNWAY 16-34 OVERRUN PAVEMENT. NEW CONSTRUCTION OF TAXIWAY G AND TAXIWAY H. RE-GRADING OF THE RUNWAY AND TAXIWAY SAFETY AREAS.
- 2 FULL DEPTH RECLAMATION RECONSTRUCTION OF THE INTERSECTION OF RUNWAY 16-34 AND RUNWAY 02-20.
- 3 FULL DEPTH RECLAMATION RECONSTRUCTION OF TAXIWAY D BETWEEN THE APRON AND TAXIWAY A. INSTALLATION OF TEMPORARY MARKINGS.
- 4 APPLICATION OF FINAL MARKINGS ON ALL PROPOSED PAVEMENT (NOT SHOWN).

- NOTES:**
1. SEE CONSTRUCTION SAFETY AND PHASING NOTES FOR ADDITIONAL DETAILS.
 2. SEE SHEETS GC-101 - GC-401 FOR BARRICADE AND CLOSURE MARKER LOCATIONS.
 3. CONTRACTOR SHALL HAVE AN APPROVED PAVEMENT BROOM OR VACUUM TRUCK AVAILABLE ON SITE AT ALL TIMES. HYDRANTS TO FILL VACUUM TRUCK WILL BE AVAILABLE ON AIRPORT PROPERTY.
 4. THE CONTRACTOR WILL BE RESPONSIBLE FOR PROVIDING SUFFICIENT LIGHTING TO ADEQUATELY ILLUMINATE THE WORK AREA DURING NIGHTTIME OPERATIONS. PORTABLE LIGHTING SHALL NOT BE ORIENTED IN SUCH A WAY TO CAUSE IMPACT TO AIRPORT OPERATIONS.
 5. IN NO EVENT SHALL CONSTRUCTION VEHICLES, EQUIPMENT, OR MATERIALS BE PARKED/STORED WITHIN 50' OF BARRICADES OR ACTIVE AIRFIELD PAVEMENT.
 6. CONTRACTOR TO REMAIN CLEAR OF ACTIVE RUNWAY UNLESS CROSSING BETWEEN WORK AREAS. CONTRACTOR TO MONITOR UNICOM FREQUENCY (122.8) AND BROADCAST POSITION AND INTENTION WHEN ENTERING THE ACTIVE RUNWAY.

PRINTING NOTE: THIS SHEET SHOULD BE PRINTED IN COLOR

REV.	DATE	DESCRIPTION

E11

ANDREWS COUNTY
 AIRPORT
 ANDREWS, TEXAS

RUNWAY 16 AND TAXIWAY A
 RECONSTRUCTION

CONSTRUCTION SAFETY AND PHASING PLAN - OVERVIEW

JOB NO.: 22A11972
 DATE: JAN 2023
 DESIGNED BY: AMJ
 DRAWN BY: AMJ

BAR IS ONE INCH ON ORIGINAL DRAWING
 IF NOT ONE INCH ON THIS SHEET, ADJUST SCALES ACCORDINGLY.

DRAWING NUMBER
GC-003

SHEET NUMBER
8

File: L:\2022\22A11972 - E11 RW 16-34 and TW A Recon\Drawings\E11_RW_RHB-GC-001.dwg Last Save: 1/25/2023 2:57 PM Last saved by: JAHenderson
 Last plotted by: Henderson, James, A Plot Style: AECmono.ctb Plot Scale: 1:1 Plot Date: 1/26/2023 8:34 AM Plotter used: AutoCAD PDF (General Documentation).pc3



SIGN-IN SHEET

Name	Representing	Phone #	Email
Eddy Streglitz	caliche Plus LLC.	325-386-3147	calicheplus@outlook.com
J. L. King	Buckeye Hog	432-528-2576	jking@outlook.com
Craig Kennedy	Road Recyclers	466 480 9116	CRAIG@RoadRecylers.com
Sergio Murillo	Lesna Construction	(915)541-5752	smurillo@lesnainc.com
James H Fields	James Hamilton Const Co	(575) 313 4328	jfields@dignpave.com
Jasm Stailey	James Hamilton Const Co	575-388-1546	jstailey@dignpave.com
PAUL SLUSSER	TX DOT AVAI	512-466-8546	paul.slusser@txdot.gov
Robert Vargas	Andrews County	432-664-0750	rvargas@co.aviation.tx.us
Stephen Schwieterman	Garver	214-492-3621	SSchiwieterman@GarverUSA.com
ALEX JESSOP	GARVER	214 - 451 - 2963	AMJESSOP@GARVERUSA.COM