

TABLE OF CONTENTS
MOORE COUNTY AIRPORT
TXDOT SOLICITATION No.: RFQ2404DUMAS-00046

1. REQUEST FOR QUALIFICATIONS SOLICITATION
2. EVALUATION CRITERIA
3. PROJECT DIAGRAM
4. AIRPORT LAYOUT PLAN
5. [FORM AVN-550](#)-(PLEASE BE SURE TO DOWNLOAD THE MOST RECENT REVISED FORM DATED 8/2016)
6. INSTRUCTIONS FOR RESPONDING TO A SOLICITATION IN EGRANTS

**Texas Department of Transportation
Aviation Division
Request for Qualifications (RFQ) for
Professional Engineering Services**

Moore County, through its agent, the Texas Department of Transportation (TxDOT), intends to engage a professional engineering firm for services pursuant to Chapter 2254, Subchapter A, of the Government Code. TxDOT Aviation Division will solicit and receive qualification statements for the current aviation project as described below.

Current Project: Moore County; TxDOT CSJ/Project ID: 2404DUMAS.
The TxDOT Project Manager is Paul Slusser.

Scope: Provide engineering and design services, including construction administration, to: Apron Expansion.

The Agent, in accordance with the provisions of Title VI of the Civil Rights Act of 1964 (78 Stat. 252, 42 U.S.C. §§ 2000d to 2000d-4) and the Regulations, hereby notifies all respondents that it will affirmatively ensure that for any contract entered into pursuant to this advertisement, disadvantaged business enterprises will be afforded full and fair opportunity to submit in response to this solicitation and will not be discriminated against on the grounds of race, color, or national origin in consideration for an award.

The proposed contract is subject to 49 CFR Part 26 concerning the participation of Disadvantaged Business Enterprises (DBE).

The DBE goal for the design phase of the current project is **4%**. The goal will be re-set for the construction phase.

To assist in your qualification statement preparation the criteria, project diagram, and most recent Airport Layout Plan are available online at <http://www.dot.state.tx.us/avn/avninfo/notice/consult/index.htm> by selecting “Moore County Airport.” The qualification statement should address a technical approach for the current scope only. Firms shall use page 4, Recent Airport Experience, to list relevant past projects.

AVN-550 Preparation Instructions:

Interested firms shall utilize the latest version of Form AVN-550, titled “Qualifications for Aviation Architectural/Engineering Services”. The form may be requested from TxDOT, Aviation Division, 125 E. 11th Street, Austin, Texas 78701-2483, phone number, 1-800-68-PILOT (74568). The form may be emailed by request or downloaded from the TxDOT website at <http://www.txdot.gov/inside-txdot/division/aviation/projects.html>. The form may not be altered in any way and must not contain Quick Response (QR) codes or links. The form fields must be completed in black font, without changing the existing font size or color, and must not contain any bold or italicized words. If a firm is non-compliant, the submittal of AVN-550 will be deemed as

non-responsive. Firms must carefully follow the instructions provided on each page of the form. Qualifications shall not exceed the number of pages in the AVN-550 template. The AVN-550 consists of eight pages of data plus one optional illustration page. A prime provider may only submit one AVN-550. If a prime provider submits more than one AVN-550 or submits a cover letter with the AVN-550, that provider will be disqualified. Responses to this solicitation WILL NOT BE ACCEPTED IN ANY OTHER FORMAT.

ATTENTION: To ensure utilization of the latest version of Form AVN-550, firms are encouraged to download Form AVN-550 from the TxDOT website as addressed above. Utilization of Form AVN-550 from a previous download may not be the exact same format. Form AVN-550 is a PDF Template.

The Form AVN-550 must be completed accurately to include the correct Airport Name and TxDOT Project ID number. The completed Form AVN-550 must be received in the TxDOT Aviation eGrants system no later than **February 27, 2024, 2:00 p.m.** (CDST). Electronic facsimiles or forms sent by email or regular/overnight mail will not be accepted.

Firms that wish to submit a response to this solicitation must be a user in the TxDOT Aviation eGrants system no later than one business day before the solicitation due date. To request access to eGrants, please complete the Contact Us web form located at <http://txdot.gov/government/funding/egrants-2016/aviation.html>

An instructional video on how to respond to a solicitation in eGrants is available at <http://txdot.gov/government/funding/egrants-2016/aviation.html>

Step by step instructions on how to respond to a solicitation in eGrants will also be posted in the RFQ packet at <http://www.dot.state.tx.us/avn/avninfo/notice/consult/index.htm>.

The consultant selection committee will be composed of local government representatives. The final selection by the committee will generally be made following the completion of review of AVN-550s. The committee will review all AVN-550s and rate and rank each. The Evaluation Criteria for Engineering Qualifications can be found at <http://www.txdot.gov/inside-txdot/division/aviation/projects.html> under Information for Consultants. All firms will be notified and the top rated firm will be contacted to begin fee negotiations for the design and bidding phases. The selection committee does, however, reserve the right to conduct interviews for the top-rated firms if the committee deems it necessary. If interviews are conducted, selection will be made following interviews.

Please contact TxDOT Aviation for any technical or procedural questions at 1-800-68-PILOT (74568). For procedural questions, please contact Noemi Rios, Contract Specialist. For technical questions, please contact Paul Slusser, Project Manager.

For questions regarding responding to this solicitation in eGrants, please contact the TxDOT Aviation help desk at 1-800-687-4568 or avn-egrantshelp@txdot.gov.



EVALUATION CRITERIA FOR AIRPORT PLANNING QUALIFICATIONS

The following criteria will generally be used in evaluating consultants submitting qualifications; however, the Consultant Selection Committee may develop additional consultant evaluation criteria and point values, if desired. The Consultant Selection Committee should assign points to be used for the Consultant Rating Sheet if they do not use the suggested point values. The TxDOT Project Manager can assist the Selection Committee in interpreting the criteria and establishing point values for each criterion, if necessary.

Suggested Point Values and Selection Criteria

- 1. Capability to perform all of the services required for this project and professional qualifications of key personnel assigned to this project relevant to the work to be performed. (25 points)**

Does the consultant have the necessary resources to perform all of the services required (e.g.: planning, surveying, CAD, etc.)? Who are the professionals that will be working on this project on a daily basis and how do their qualifications and experience with general aviation airport planning projects compare with other respondents? [Sources of information: Aviation Planning Team Form, Recent Relevant Airport Experience Form, Proposed Technical Approach Form, and possibly the Optional Summary.]
- 2. Recent experience, within the last ten years, in the development of airport plans comparable to the proposed project. (25 points)**

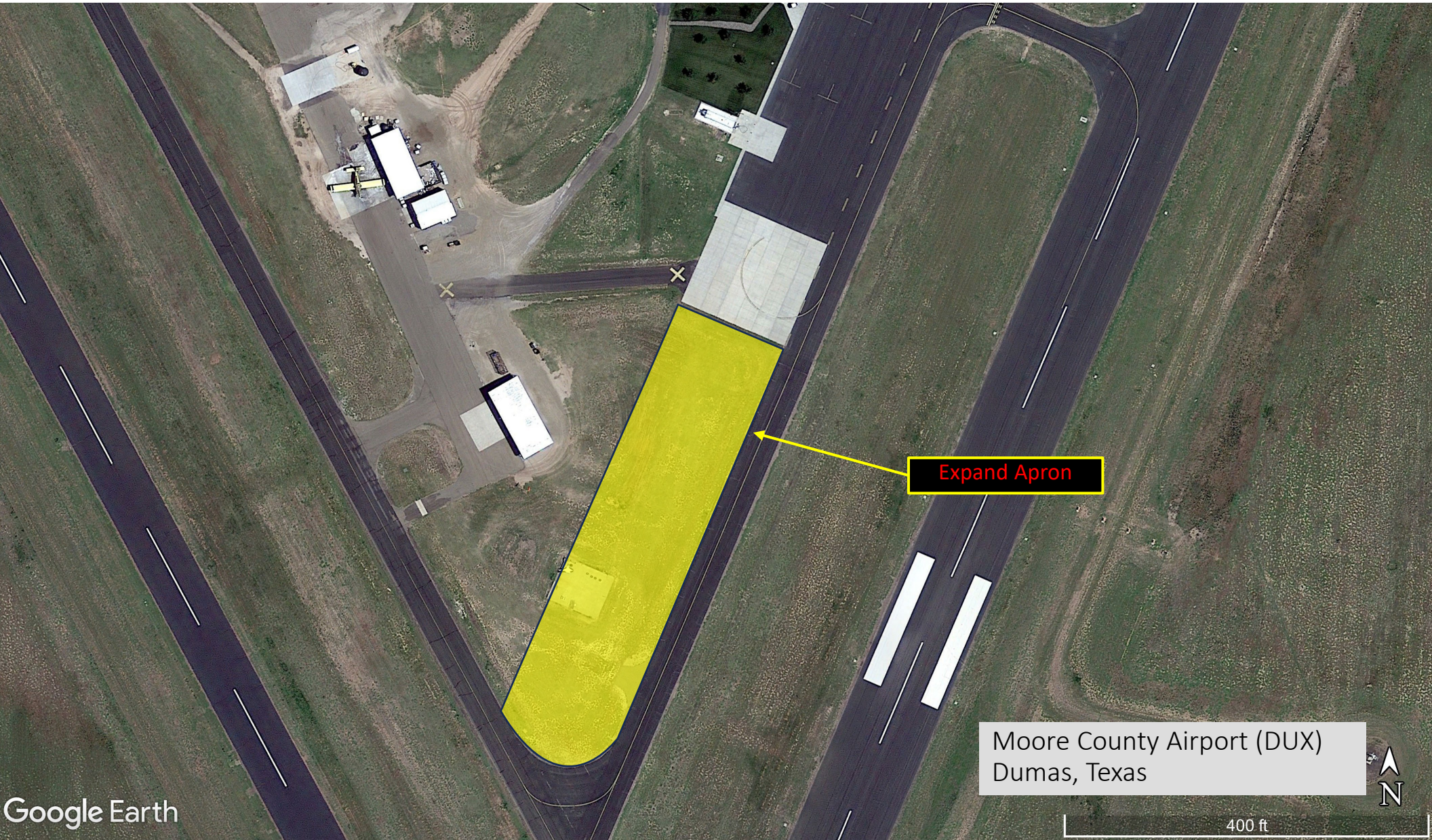
Does the consultant have direct experience developing general aviation airport plans similar to those proposed for this location? [Sources of information: Aviation Planning Team Form, Recent Relevant Airport Experience Form, and possibly the Optional Summary.]
- 3. Ability to meet the schedules and deadlines of this project and reputation for competence, timeliness, and quality of performance and work product. (25 points)**

Does the proposed planning team have sufficient time to devote to this project in order to meet the schedule submitted in the qualifications? Is the proposed schedule realistic? Does the consultant consistently meet contractual timetables? Has the work performed for other airports been satisfactory? [Sources of information: Aviation Planning Team Form, Recent Relevant Airport Experience Form, Project Schedule Form, possibly the Optional Summary, and reference check.]

4. Proposed Technical Approach and Schedule to Accomplish the Project. (25 points)

Does the consultant show specific understanding and familiarity with the particular requirements of this project and how to address them? Is the consultant familiar with relevant planning guidance? Is the schedule appropriate to accomplish the project?

[Sources of information: Proposed Technical Approach Form, Proposed Schedule Form, and possibly the Optional Summary.]

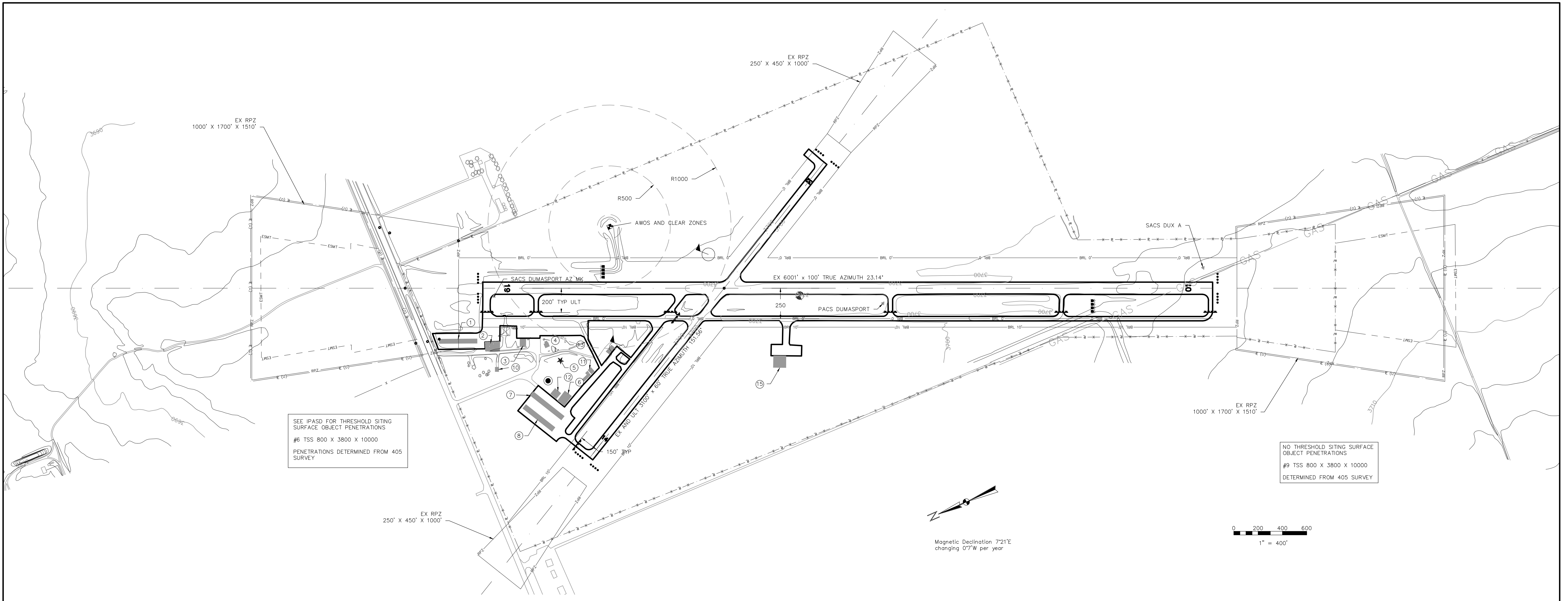


Expand Apron

Moore County Airport (DUX)
Dumas, Texas



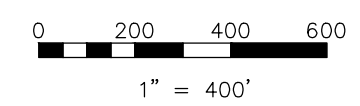
400 ft



SEE IPASD FOR THRESHOLD SITING SURFACE OBJECT PENETRATIONS
#6 TSS 800 X 3800 X 10000
PENETRATIONS DETERMINED FROM 405 SURVEY

NO THRESHOLD SITING SURFACE OBJECT PENETRATIONS
#9 TSS 800 X 3800 X 10000
DETERMINED FROM 405 SURVEY

Magnetic Declination 7'21"E
changing 0'7"W per year



RUNWAY DATA TABLE	RW 1-19		RW 14-32	
	EXISTING	EXISTING	A-I	A-I
RUNWAY ARC	B-II		A-I	
DESIGN AIRCRAFT & ARC	Hawker BH 125-400		Socata TBM 700	
BALANCED FIELD LENGTH	6300'		2132'	
RUNWAY LENGTH & WIDTH (ft.)	6001' X 100'		3100' X 60'	
PAVEMENT DESIGN STRENGTH (thousands lbs.)	60 DW		21 SW 32 DW	
RUNWAY LIGHTING	MIRL		MIRL	
PERCENT EFFECTIVE GRADIENT	0.12%		0.08%	
PERCENT WIND COVERAGE	92.99% 13 kts		76.07%	
MAXIMUM ELEVATION ABOVE MSL	3706.4'		3701.0'	
RW SURFACE TYPE	ASPH		ASPH	
RSA - LENGTH BEYOND RW END	300'		240'	
RSA - WIDTH	150'		120'	
OFA - LENGTH BEYOND RW END	300'		240'	
OFA WIDTH	500'		250'	
OFZ - LENGTH BEYOND RW END	200'		200'	
OFZ WIDTH	400'		250'	
RUNWAY END	01	19	14	32
APPROACH TYPE	GPS LPV	GPS LPV	VISUAL	VISUAL
APPROACH VISIBILITY MINIMA	3/4 MILE	3/4 MILE	VISUAL	VISUAL
THRESHOLD SITING SURFACE & SLOPE	#9 34:1	#6 20:1	#5 20:1	#5 20:1
RUNWAY MARKING	NPI	NPI	BASIC	BASIC
RUNWAY VISUAL AIDS	PAPI	PAPI	NONE	NONE
TOUCHDOWN ZONE ELEVATION	3706.42'	3701.58'	3701.1'	3701.0'
FAR PART 77 APPROACH CATEGORY	D	D	A(V)	A(V)
FAR PART 77 APPROACH SURFACE SLOPE	34:1	34:1	20:1	20:1
TAKE-OFF RUN AVAILABLE (TORA)	6001'	6001'	3100'	3100'
TAKE-OFF DISTANCE AVAILABLE (TODA)	6001'	6001'	3100'	3100'
ACCELERATE STOP DISTANCE AVAIL. (ASDA)	6001'	6001'	3100'	3100'
LANDING DISTANCE AVAILABLE (LDA)	6001'	6001'	3100'	3100'

BUILDING TABLE			
BUILDING NUMBER	DESCRIPTION		TOP ELEVATION
	EXISTING	ULTIMATE	
1	T-HANGAR	--	3716.5'
2	T-HANGAR	--	3726.3'
3	HANGAR	--	3725.7'
4	OFFICE	--	3706.2'
5	ROTATING BEACON	--	3726.5'
6	HANGAR	--	3722.7'
7	T-HANGAR	--	3711.7'
8	T-HANGAR	--	3712.7'
10	AIRPORT SHOP	--	3712.1'
11	AG OPERATOR	--	3706.8'
12	HANGAR	--	3717.6'
13	FUEL STORAGE	--	3721.3'
14	NDB TOWER	--	3767.0'
15	BOX HANGAR	--	UNKNOWN

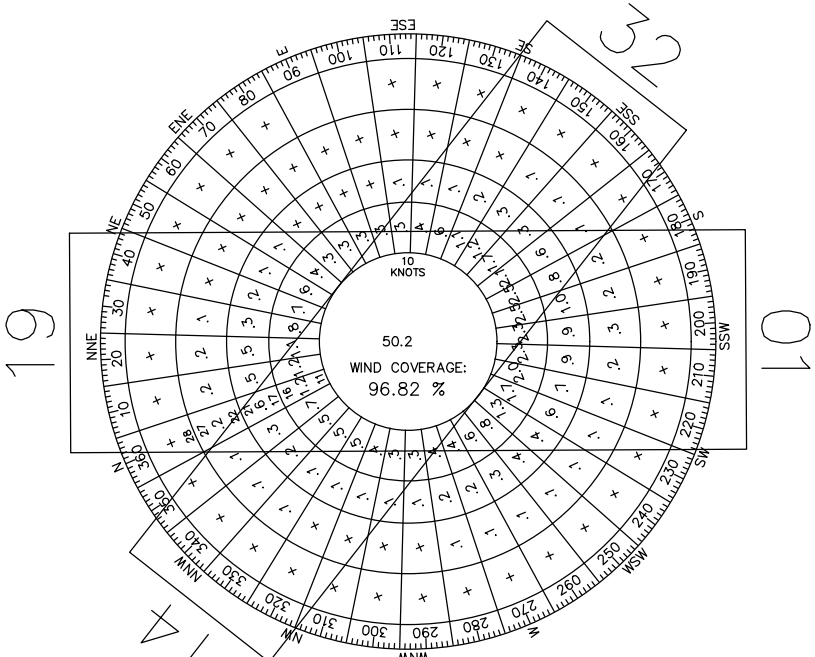
AIRPORT DATA TABLE		
	EXISTING	ULTIMATE
AIRPORT ELEVATION (MSL)	3706.4'	3706.4'
AIRPORT NAVIGATION AIDS	GPS	GPS
MEAN MAX TEMP (Hottest Month °F)	92°F	92°F
AIRPORT REFERENCE CODE (ARC)	B-II	B-II
TAXIWAY MARKING	STD	STD
TAXIWAY LIGHTING	NONE	NONE
AIRPORT REFERENCE POINT COORDINATES	35°51'26.749" N 102°00'47.914" W	35°51'26.749" N 102°00'47.914" W

NOTES
DATUM COORDINATE SYSTEMS - HORIZONTAL DATUM
NAD_1983_StatePlane_Texas_North_FIPS_4201_Feet, VERTICAL DATUM NAVD88.
NO OFZ OBJECT PENETRATIONS
405 SURVEY PERFORMED BY GEODETIX, INC. 2008
CAUTION ZONE LIGHTS ARE PRESENT ON THE RUNWAY

RUNWAY END COORDINATES AND ELEVATIONS			
RUNWAY END	LATITUDE	LONGITUDE	ELEVATION
EXISTING END OF RWY 01	35°50'55.6401" N	102°01'03.4439" W	3706.42'
EXISTING END OF RWY 19	35°51'50.2157" N	102°00'34.7920" W	3698.13'
EXISTING END OF RWY 14	35°51'47.6247" N	102°00'54.5447" W	3698.5'
EXISTING END OF RWY 32	35°51'20.6751" N	102°00'36.6182" W	3700.1'

COMMENTS

WIND COVERAGE		
RUNWAY	CROSSWIND COMPONENT	PERCENT
RUNWAY 01-19	13 KNOTS	92.99%
RUNWAY 14-32	10.5 KNOTS	76.07%
COMBINED COVERAGE		96.82%



Wind Data: Lubbock, 1997 to 2006 All Weather

ALD LEGEND		
FEATURE	EXISTING	ULTIMATE
RUNWAY/TAXIWAY OUTLINE	— — — —	— — — —
BUILDINGS/FACILITIES	■	■
AIRPORT PROPERTY LINE	— — — —	— — — —
AIRPORT REFERENCE POINT	⊙	⊙
WIND CONE & SEGMENTED CIRCLE	⊙	⊙
THRESHOLD LIGHTS	••••	••••
RW END IDENTIFIER LIGHTS (REILS)	•	•
C&G BEACON	★	★
VGSI	■	■
HOLD POSITION AND SIGN	■	■
AWOS	■	■
SURVEY MARKERS	▽	▽
GROUND CONTOURS	— — — —	— — — —
SIGNIFICANT OBJECT LOCATION	○	○
TREES/BRUSH	⊖	⊖
NONDIRECTIONAL BEACON (NDB)	⊙	⊙

REVISIONS: ADD HANGAR 15 AND ADDITIONAL TERMINAL AREA PAVEMENT. SEPT 2018 TxDOT MACKE

TEXAS DEPARTMENT OF TRANSPORTATION AVIATION DIVISION ALP approved according to FAA AC 150/5300-13 CH 14 and AC 150/5070-6A plus the requirements of a favorable environmental finding prior to the start of any land acquisition or construction and FAA forms 7460-1 and 7480-1 prior to an construction on airport property. Copyright 2009 TxDOT Aviation Division. All rights reserved. DAVID FULTON, DIRECTOR, AVIATION DIVISION 6/24/10 DATE		AIRPORT SPONSOR Current and future development depicted on this ALP is approved and supported by the airport sponsor. TITLE, AIRPORT SPONSOR'S REPRESENTATIVE SIGNATURE DATE	
PREPARED BY: TxDOT Aviation Division 150 E. Riverside Dr. Austin, TX 78704 800.687.4568		KS Nov 2008 DESIGNED BY DATE LH Nov 2008 CHECKED BY DATE	

AIRPORT LAYOUT DRAWING
Moore County Airport (DUX)
Dumas, Texas

SHEET 1 OF 3



Instructions for Responding to a RFQ Solicitation

Aviation Division

eGrants Workflow:	RFQ Response
eGrants Role:	Subgrantee Administrator (SA) Subgrantee Staff (SS)
eGrants link	https://apps2.dot.state.tx.us/apps/egrants2/logout2.aspx
eGrants help:	eGrants help desk Monday – Friday 8AM – 4PM CD/ST (excluding state/federal holidays) avn-egrantshelp@txdot.gov or 1-800-687-4568

STEP	ROLE	ACTIONS	NOTES
01	SA	Go to View Opportunities. a. Select <u>Apply Now</u> to the opportunity b. The RFQ Response Menu is opened	Very important to click on the name of the document and not the organization name Make a note of the opportunity due date to ensure you respond in time
02	SA/SS	Click on View, Edit and Complete Forms a. Select RFQ Applicant Form b. Confirm Project information and address c. Upload AVN-550, 550D, 551 or 551D <u>PLEASE MAKE SURE YOU SELECT THE CORRECT PDF FILE BEFORE CHANGING STATUS.*</u> d. Hit Save	You should print the proposal document to a PDF so that it becomes un-editable. Or, you may upload a scanned copy of the AVN-550, 550D, 551, or 551D.
03	SA	When you are ready to submit your response, click on " <u>Save and submit to CS review</u> ". YOU ARE DONE	You will get an email saying the response was successfully submitted; the status must be changed to RFQ Response in CS Review by the due date and time posted in the solicitation.
04	SA/SS	<u>WAIT</u> UNTIL A SELECTION NOTIFICATION IS SENT TO YOU	
05	SS/SA	<u>AFTER SELECTION NOTIFICATION IS RECEIVED</u> Log in to view status of response. Once the scores are verified, TxDOT will move the response to an interview, selected or not selected status of which you can log in to see the status of your response.	The selection notification will refer users to eGrants to view the status of their response. User may also view the TxDOT website for selection information.

*If the responder posts the incorrect file.

- If status has been changed and the due date for the response has not expired, contact the help desk to ask for the status to be administratively changed back to Response in Process.
- If the incorrect file was posted, the incorrect file may be deleted and the correct one posted as long as the status has not been changed to Response in CS Review. Respondent will need to check the “delete” box and hit save. The page refreshes. Then post the correct file, save, and change the status.

If you are not set up in eGrants and wish to respond to a posted solicitation, you may contact the aviation help desk for assistance by using the webform available at [eGrants Help Desk Form](#)

Some organizations will have many user members. Each organization should determine which user member will submit the completed avn-550, 550D, 551, or 551D in eGrants. after the opportunity is selected for the organization, it will no longer appear on any other user's home page unless the initiating user cancels the response.