

TABLE OF CONTENTS
KIMBLE COUNTY AIRPORT
TxDOT SOLICITATION No.: RFQ-24ALJNCTN-00047

1. REQUEST FOR QUALIFICATIONS ANNOUNCEMENT
2. EVALUATION CRITERIA
3. AIRPORT LAYOUT PLAN
4. INSTRUCTIONS FOR RESPONDING TO A SOLICITATION IN EGRANTS
5. [FORM AVN-551](#) (PLEASE BE SURE TO DOWNLOAD THE MOST RECENT REVISED FORM DATED 8/2016)
<http://www.txdot.gov/inside-txdot/division/aviation/projects.html>

Texas Department of Transportation
Aviation Division
Request for Qualifications (RFQ) for Professional
Services

Kimble County, through its agent, the Texas Department of Transportation (TxDOT), intends to engage a qualified firm for services. This solicitation is subject to 49 U.S.C. §47107(a)(17) and will be administered in the same manner as a solicitation conducted under Chapter 2254, Subchapter A, of the Texas Government Code. TxDOT Aviation Division will solicit and receive qualification statements for professional services as described below:

Airport Sponsor: Kimble County; TxDOT CSJ/Project No.: 24ALJNCTN. The TxDOT Project Manager is Ben Breck.

Scope: Prepare an ALP update with Narrative:

1. Prepare an ALP with Narrative consistent with the most current FAA Advisory Circulars and Standard Operating Procedures;
2. Develop a Capital Improvement Plan, including a recommended phasing plan and financial overview that considers local, state, federal, and alternative funding sources;
3. Prepare and update the airport property map (Exhibit A) consistent with the most current FAA Advisory Circulars and Standard Operating Procedures;
4. Establish phased, attainable goals for airport improvements and development based on a forecast for aviation demand and current and future critical aircraft; and
5. Develop a Height Hazard Zoning Map incorporating the airport's protective surfaces, including Part 77 and others as appropriate.

The Agent, in accordance with the provisions of Title VI of the Civil Rights Act of 1964 (78 Stat. 252, 42 U.S.C. §§ 2000d to 2000d-4) and the Regulations, hereby notifies all respondents that it will affirmatively ensure that for any contract entered into pursuant to this advertisement, disadvantaged business enterprises will be afforded full and fair opportunity to submit in response to this solicitation and will not be discriminated against on the grounds of race, color, or national origin in consideration for an award.

The proposed contract is subject to 49 CFR Part 26 concerning the participation of Disadvantaged Business Enterprises (DBE).

The DBE goal is set at 0%.

To assist in your qualification statement preparation, the criteria and most recent Airport Layout Plan are available online at <http://www.dot.state.tx.us/avn/avninfo/notice/consult/index.html> by selecting “Kimble County Airport.”

AVN-551 Preparation Instructions:

Interested firms shall utilize the latest version of Form AVN-551, titled “Qualifications for Aviation Planning Services”. The form may be requested from TxDOT, Aviation Division, 125 E. 11th Street, Austin, Texas 78701-2483, phone number, (800)68-PILOT (74568). The form may be emailed by request or downloaded from the TxDOT website at <http://www.txdot.gov/inside-txdot/division/aviation/projects.html>. The form may not be altered in any way and must not contain Quick Response (QR) codes or links. The form fields must be completed in black font, without changing the existing font size or color, and must not contain any bold or italicized words. If a firm is non-compliant, the submittal of AVN-551 will be deemed as non-responsive. Firms must carefully follow the instructions provided on each page of the form. Qualifications shall not exceed the number of pages in the AVN-551 template. The AVN-551 consists of eight pages of data plus one optional illustration page. A prime provider may only submit one AVN-551. If a prime provider submits more than one AVN-551 or submits a cover letter with the AVN-551, that provider will be disqualified. Responses to this solicitation WILL NOT BE ACCEPTED IN ANY OTHER FORMAT.

ATTENTION: To ensure utilization of the latest version of Form AVN-551, firms are encouraged to download Form AVN-551 from the TxDOT website as addressed above. Utilization of Form AVN-551 from a previous download may not be the exact same format. Form AVN-551 is a PDF Template.

The Form AVN-551 must be completed accurately to include the correct Airport Name and TxDOT Project ID number. The completed Form AVN-551 must be received in the TxDOT Aviation eGrants system no later than March 13, 2024, 2:00 p.m. (CDST). Electronic facsimiles or forms sent by email or regular/overnight mail will not be accepted.

Firms that wish to submit a response to this solicitation must be a user in the TxDOT Aviation eGrants system no later than one business day before the solicitation due date. To request access to eGrants, please complete the Contact Us web form located at <http://txdot.gov/government/funding/egrants-2016/aviation.html>

Instructions on how to respond to a solicitation in eGrants are available at <http://txdot.gov/government/funding/egrants-2016/aviation.html>

Step by step instructions on how to respond to a solicitation in eGrants will also be posted in the RFQ packet at <http://www.dot.state.tx.us/avn/avninfo/notice/consult/index.html>.

The consultant selection committee will be composed of local government representatives. The final selection by the committee will generally be made following the completion of review of AVN-551s. The committee will review all AVN-551s and rate and rank each. The evaluation criteria for airport planning projects can be found at <http://www.txdot.gov/inside-txdot/division/aviation/projects.html> under Information for Consultants. All firms will be notified and the top-rated firm will be contacted to begin fee negotiations. The selection committee does, however, reserve the right to conduct interviews for the top-rated firms if the committee deems it necessary. If interviews are conducted, selection will be made following interviews.

Please contact TxDOT Aviation for any technical or procedural questions at (800) 68-PILOT (74568). For procedural questions, please contact Sheri Quinlan, Contract Specialist. For technical questions, please contact Ben Breck, Project Manager.

For questions regarding responding to this solicitation in eGrants, please contact the TxDOT Aviation help desk at 1-800-687-4568 or avn-egrantshelp@txdot.gov



EVALUATION CRITERIA FOR AIRPORT PLANNING AND DRAINAGE STUDY QUALIFICATIONS

The following criteria will generally be used in evaluating consultants submitting qualifications; however, the Consultant Selection Committee may develop additional consultant evaluation criteria and point values, if desired. The Consultant Selection Committee should assign points to be used for the Consultant Rating Sheet if they do not use the suggested point values. The TxDOT Project Manager can assist the Selection Committee in interpreting the criteria and establishing point values for each criterion, if necessary.

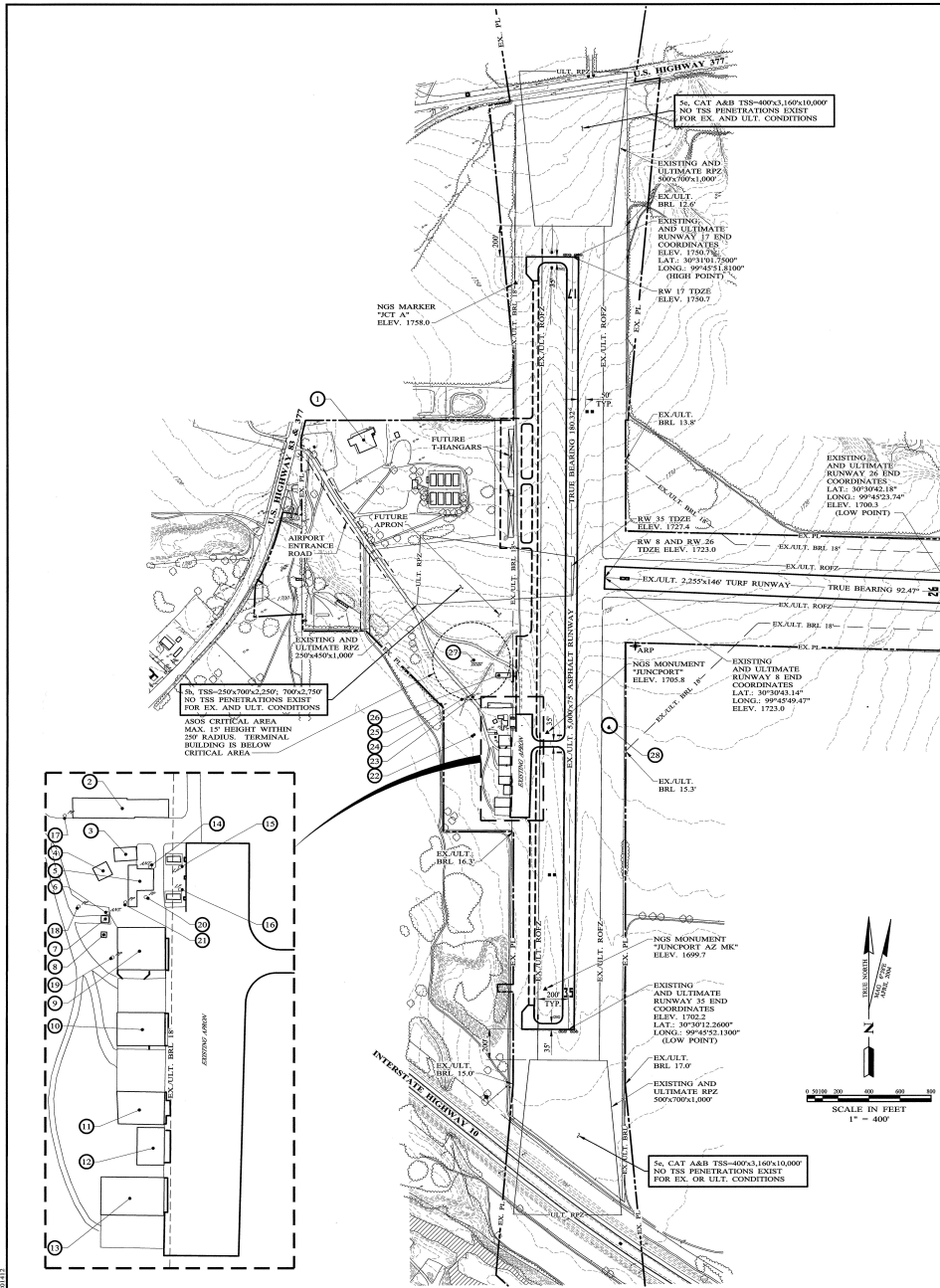
Suggested Point Values and Selection Criteria

1. **Capability to perform all of the services required for this project and professional qualifications of key personnel assigned to this project relevant to the work to be performed.** (25 points)
Does the consultant have the necessary resources to perform all of the services required (e.g.: planning, surveying, CAD, etc.)? Who are the professionals that will be working on this project on a daily basis and how do their qualifications and experience with general aviation airport planning and drainage study projects compare with other respondents? [Sources of information: Aviation Planning Team Form, Recent Relevant Airport Experience Form, Proposed Technical Approach Form, and possibly the Optional Summary.]
2. **Recent experience, within the last ten years, in the development of airport plans and drainage studies comparable to the proposed project.** (25 points)
Does the consultant have direct experience developing general aviation airport plans and drainage studies similar to those proposed for this location? [Sources of information: Aviation Planning Team Form, Recent Relevant Airport Experience Form, and possibly the Optional Summary.]
3. **Ability to meet the schedules and deadlines of this project and reputation for competence, timeliness, and quality of performance and work product.** (25 points)
Does the proposed planning and engineering team have sufficient time to devote to this project in order to meet the schedule submitted in the qualifications? Is the proposed schedule realistic? Does the consultant consistently meet contractual timetables? Has the work performed for other airports been satisfactory? [Sources of information: Aviation Planning Team Form, Recent Relevant Airport Experience Form, Project Schedule Form, possibly the Optional Summary, and reference check.]

4. Proposed Technical Approach and Schedule to Accomplish the Project. (25 points)

Does the consultant show specific understanding and familiarity with the particular requirements of this project and how to address them? Is the consultant familiar with relevant planning and engineering? Is the schedule appropriate to accomplish the project?

[Sources of information: Proposed Technical Approach Form, Proposed Schedule Form, and possibly the Optional Summary.]

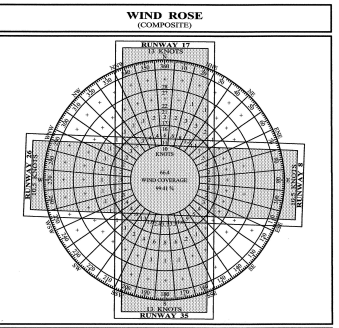


LEGEND

EXISTING SYMBOL	ULTIMATE SYMBOL	SYMBOL
---	---	PROPERTY LINE
- - - -	- - - -	BUILDING RESTRICTION LINE
- - - -	- - - -	RUNWAY OBJECT FREE ZONE
- - - -	- - - -	RUNWAY PROTECTION ZONE
- - - -	- - - -	BUILDING RESTRICTION LINE
- - - -	- - - -	GRADE CONTOURS
- - - -	- - - -	FENCE
- - - -	- - - -	OVERHEAD UTILITY LINE
- - - -	- - - -	SURVEY MONUMENT
- - - -	- - - -	POWER POLE
- - - -	- - - -	NA
- - - -	- - - -	TREESTRUE LINE
- - - -	- - - -	BUILDINGS/STRUCTURES
- - - -	- - - -	SEGMENTED CIRCLE
- - - -	- - - -	RUNWAY, TAXIWAY, AND APRON AREAS
- - - -	- - - -	PRECISION APPROACH PATH INDICATOR
- - - -	- - - -	AIRPORT REFERENCE POINT (ARP)
- - - -	- - - -	TAXIWAY GUIDANCE SIGN
- - - -	- - - -	BEACON
- - - -	- - - -	THRESHOLD LIGHTS

BUILDING TABLE

ID	DESCRIPTION	TOP ELEVATION (FEET ABOVE MSL)
1	COMMUNITY CENTER (15.0' H)	1747
2	BUILDING (16.9' H)	1722
3	BUILDING (8.6' H)	1713
4	BUILDING (11.9' H)	1716
7	BUILDING (12.6' H)	1716
8	PORTABLE BUILDING (8.8' H)	1720
9	HANGAR (18.4' H)	1713
10	HANGAR (20.0' H)	1723
11	HANGAR (17.5' H)	1721
12	HANGAR (24.5' H)	1727
13	HANGAR (22.8' H)	1725
14	ANTENNA (30.0' H)	1744
15	LIGHT POLE (14.0' H)	1718
16	LIGHT POLE (14.0' H)	1718
17	POWER POLE (24.2' H)	1728
18	POWER POLE (28.4' H)	1732
19	POWER POLE (25.9' H)	1727
20	POWER POLE (23.5' H)	1728
21	POWER POLE (24.5' H)	1729
22	BEACON TOWER (27.9' H)	1759
23	POWER POLE (25.0' H)	1729
24	POWER POLE (32.7' H)	1736
25	POWER POLE (33.7' H)	1733
26	TERMINAL BUILDING (15.0' H)	1721
27	ASOS (26.1' H)	1742
28	WIND CONE (24.9' H)	1734



PERIOD COVERED: 1988-1997	RUNWAY	13 KNOTS	10.5 KNOTS
TOTAL OBSERVATIONS = 84,108	17-35	96.85	93.59
SOURCE: SAN ANGELO MUNICIPAL AIRPORT, SAN ANGELO, TX	8-26	84.70	75.43
	COMBINED	99.41	

SURVEY NOTES:

1. SURVEYING DATA SHOWN FOR AIRPORT BUILDINGS WERE PROFESSIONALLY SURVEYED IN NOVEMBER, 2002, AND MEETS FAA NO. 405 OBSTRUCTION SURVEYING ACCURACIES.
2. NO ROZE PENETRATIONS EXIST FOR RUNWAYS 17, 35, 8, OR 26.
3. PART 77 APPROACH SLOPE PENETRATIONS EXIST FOR ULTIMATE CONDITIONS OF RUNWAY 17 END. AERONAUTICAL STUDY TO BE CONDUCTED FOR THESE PENETRATIONS PRIOR TO COMMENCEMENT OF ULTIMATE CONDITIONS FOR RW17. NO EXISTING CONDITIONS PART 77 APPROACH SLOPE OR EXISTING AND ULTIMATE CONDITIONS TSS PENETRATIONS EXIST FOR RUNWAY 17 END. SEE SHEET 3.
4. NO PART 77 APPROACH SLOPE OR TSS PENETRATIONS EXIST FOR OTHERWISE SHOWN.
5. ZONING INFORMATION: ON 3 AUG 82, BOTH RUNWAYS BASED ON TAC MAP DATED 20 MAR 80. RUNWAY 17-35 WAS ZONED FOR 4,000' RUNWAY LENGTH WITH OTHER THAN UTILITY NON-PRECISION INSTRUMENT APPROACHES. RUNWAY 8-26 ZONED FOR 1,800' RUNWAY LENGTH WITH UTILITY VISUAL APPROACHES.

WILDON SCRIVNER, P.E.
HIBBS & TODD, INC.
ARLINGTON, TX

NOTES

1. BUILDING HEIGHT AT ULTIMATE BRL IS 18 FEET, UNLESS OTHERWISE SHOWN.
2. NO ROZE PENETRATIONS EXIST FOR RUNWAYS 17, 35, 8, OR 26.
3. PART 77 APPROACH SLOPE PENETRATIONS EXIST FOR ULTIMATE CONDITIONS OF RUNWAY 17 END. AERONAUTICAL STUDY TO BE CONDUCTED FOR THESE PENETRATIONS PRIOR TO COMMENCEMENT OF ULTIMATE CONDITIONS FOR RW17. NO EXISTING CONDITIONS PART 77 APPROACH SLOPE OR EXISTING AND ULTIMATE CONDITIONS TSS PENETRATIONS EXIST FOR RUNWAY 17 END. SEE SHEET 3.
4. NO PART 77 APPROACH SLOPE OR TSS PENETRATIONS EXIST FOR OTHERWISE SHOWN.
5. ZONING INFORMATION: ON 3 AUG 82, BOTH RUNWAYS BASED ON TAC MAP DATED 20 MAR 80. RUNWAY 17-35 WAS ZONED FOR 4,000' RUNWAY LENGTH WITH OTHER THAN UTILITY NON-PRECISION INSTRUMENT APPROACHES. RUNWAY 8-26 ZONED FOR 1,800' RUNWAY LENGTH WITH UTILITY VISUAL APPROACHES.

AIRPORT DATA TABLE

ITEM	EXISTING	ULTIMATE
AIRPORT ELEVATION (FEET MSL)	1750.7	1750.7
AIRPORT NAVIGATION AIDS	VOR / DME RNAV / GPS	VOR / DME RNAV / GPS
MEAN MAX. TEMP. °F (HOTTEST MONTH)	97°F (JULY)	97°F (JULY)
AIRPORT REFERENCE CODE (ARC)	B-II	B-II
TAXIWAY LIGHTING	NONE	MILT
TAXIWAY MARKING	CENTERLINE	CL W/REFLECTORS
WIND COVERAGE (ALL RUNWAYS) (%)	99.41	99.41
AIRPORT REFERENCE POINT - LATITUDE	30°30'38.762"	30°30'38.762"
AIRPORT REFERENCE POINT - LONGITUDE	99°45'47.198"	99°45'47.198"
ALL COORDINATES: HORIZONTAL NAD 83; VERTICAL NAD 88		

RUNWAY DATA TABLE

RUNWAY 8-26				RUNWAY 17-35				
EXISTING	ULTIMATE	ITEM	EXISTING	ULTIMATE	EXISTING	ULTIMATE	ITEM	
2,400'x140'	2,400'x140'	RUNWAY LENGTH x WIDTH	5,000'x75'	5,000'x75'	5,000'x75'	5,000'x75'		
TURF	TURF	PAVEMENT DESIGN STRENGTH (GROSS-SWG (LBS))	30,000	30,000	30,000	30,000		
NONE	NONE	RUNWAY LENGTH	MIRL (30')	MIRL	MIRL (30')	MIRL		
240'	240'	ESS LENGTH BEYOND RUNWAY END (FEET)	150'	150'	150'	150'		
240'	240'	ESS WIDTH (FEET)	150'	150'	150'	150'		
240'	240'	ROFA LENGTH BEYOND RUNWAY END (FEET)	300'	300'	300'	300'		
250'	250'	ROFA WIDTH (FEET)	500'	500'	500'	500'		
200'	200'	ROFZ LENGTH BEYOND RUNWAY END (FEET)	200'	200'	200'	200'		
240'	240'	ROFZ WIDTH (FEET)	400'	400'	400'	400'		
8	26	8	26	RUNWAY END	17	35	17	35
NONE	NONE	NONE	NONE	RUNWAY MARKING	NP	NP	NP	NP
NONE	NONE	NONE	NONE	RUNWAY VISUAL AIDS	NONE	NONE	PARB	PARB
NONE	NONE	NONE	NONE	APPROACH VISIBILITY MINIMUMS	1 MILE VISUAL	1 MILE	1 MILE	1 MILE
1723.0	1723.0	1723.0	1723.0	TOUCHDOWN ZONE ELEVATION (FT MSL)	1750.7	1750.7	1727.4	1727.4
2,255'	2,255'	2,255'	2,255'	TAKE-OFF RUN AVAILABLE (TORA)	5,000'	5,000'	5,000'	5,000'
2,255'	2,255'	2,255'	2,255'	TAKE-OFF DISTANCE AVAILABLE (TODA)	5,000'	5,000'	5,000'	5,000'
2,255'	2,255'	2,255'	2,255'	APPROACH STOP DISTANCE AVAILABLE (ASDA)	5,000'	5,000'	5,000'	5,000'
2,255'	2,255'	2,255'	2,255'	LANDING DISTANCE AVAILABLE (LDA)	5,000'	5,000'	5,000'	5,000'

NO.	APPROVED MODIFICATIONS TO FAA AC 150/5300-13	BY	CHK'D	DATE
NO.	REVISIONS	BY	CHK'D	DATE

TEXAS DEPARTMENT OF TRANSPORTATION
AVIATION DIVISION

AIRPORT SPONSOR

County Judge
TITLE, AIRPORT SPONSOR'S REPRESENTATIVE
Dell & P... 01-19-04
DATE

DIRECTOR, AVIATION DIVISION
5/10/04
DATE

PREPARED BY: *Dell & P...*
DESIGNED BY: APRIL, 2004
DATE
CHECKED BY: APRIL, 2004
DATE
W.K.S. DEPARTMENT OF TRANSPORTATION
Aviation Division

HIBBS & TODD, INC.
ENVIRONMENTAL AND CIVIL ENGINEERING
2500 South Wilho, Suite 202
Arlington, Texas

W.K.S. DEPARTMENT OF TRANSPORTATION
Aviation Division

AIRPORT LAYOUT DRAWING
KIMBLE COUNTY AIRPORT
JUNCTION, TEXAS

SHEET 2 OF 5

Instructions for Responding to an RFQ Solicitation

Aviation Division

eGrants Workflow:	RFQ Response
eGrants Role:	Subgrantee Administrator (SA) Subgrantee Staff (SS)
eGrants link	https://apps2.dot.state.tx.us/apps/egrants2/logout2.aspx
eGrants help:	eGrants help desk Monday – Friday 8AM – 4PM CD/ST (excluding state/federal holidays) avn-egrantshelp@txdot.gov or 1-800-687-4568

STEP	ROLE	ACTIONS	NOTES
01	SA	Go to View Opportunities. a. Select Apply Now to the opportunity b. The RFQ Response Menu is opened	Very important to click on the name of the document and not the organization name Make a note of the opportunity due date to ensure you respond in time
02	SA/SS	Click on View, Edit and Complete Forms a. Select RFQ Applicant Form b. Confirm Project information and address c. Upload AVN-550 or 551 <u>PLEASE MAKE SURE YOU SELECT THE CORRECT PDF FILE BEFORE CHANGING STATUS.*</u> d. Hit Save	You should print the proposal document to a PDF so that it becomes un-editable. Or, you may upload a scanned copy of the AVN-550/551.
03	SA	When you are ready to submit your response, click on Save and submit to CS review <u>YOU ARE DONE</u>	You will get an email saying the response was successfully submitted; the status must be changed to RFQ Response in CS Review by the due date and time posted in the solicitation.
04	SA/SS	<u>WAIT</u> UNTIL A SELECTION NOTIFICATION IS SENT TO YOU	
05	SS/SA	<u>AFTER SELECTION NOTIFICATION IS RECEIVED</u> Log in to view status of response. Once the scores are verified, TxDOT will move the response to an interview, selected or not selected status of which you can log in to see the status of your response.	The selection notification will refer users to eGrants to view the status of their response. User may also view the TxDOT website for selection information.

*If the responder posts the incorrect file.

- If status has been changed and the due date for the response has not expired, contact the help desk to ask for the status to be administratively changed back to Response in Process.
- If the incorrect file was posted, the incorrect file may be deleted and the correct one posted as long as the status has not been changed to Response in CS Review. Respondent will need to check the “delete” box and hit save. The page refreshes. Then post the correct file, save, and change the status.

If you are not set up in eGrants and wish to respond to a posted solicitation, you may contact the aviation help desk for assistance by using the webform available at [eGrants Help Desk Form](#)

Some organizations will have many user members. Each organization should determine which user member will submit the completed avn-550/551 in eGrants. after the opportunity is selected for the organization, it will no longer appear on any other user’s home page unless the initiating user cancels the response.