

# Digital Signatures

Presented by:

TxDOT

Technology Services Division (TSD)

Engineering Systems Support Branch

John J. Mora – CADD Team Leader

# Digital Signatures

## Introduction:

- The Texas Board of Professional Engineers has approved the use of electronic seals and signatures as a means of signing and sealing plans.
- TxDOT's Design Division and Technology Services Division are currently working together on a total electronic solution for digitally signing and sealing plan sets.

# Digital Signatures

## Early on:

- TSD researched several DOT's workflow for digitally signing/sealing plan sets.
- TSD worked with Bentley Systems Inc. (BSI) to arrive at a viable solution that offered both a means to electronically sign/seal plan sets and a way to validate electronic signatures are from a trusted and reliable source.
- TSD worked with TxDOT Information Security personnel to assist with direction and advice on selecting Digital ID provider.

# Digital Signatures

## Decisions Made:

- TxDOT will be using VeriSign Inc. as it's Digital ID provider for it's engineers.
- TxDOT will be using Adobe Professional 8.0, or above, for applying digital signatures.
- All plan sets will be submitted in PDF file format.

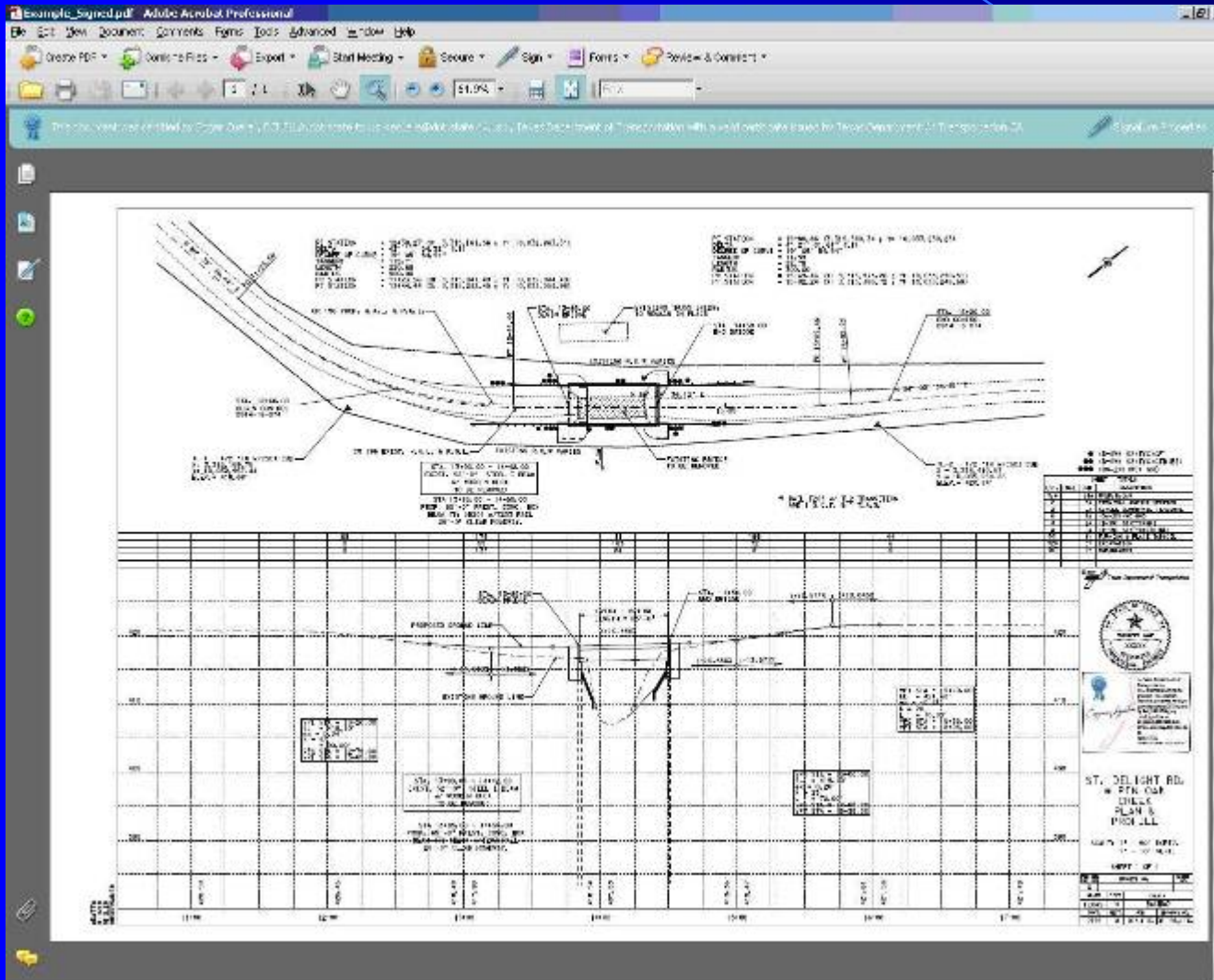
# Digital Signatures

## TxDOT Proposed Workflow:

- Plan sets to be created and drawn using Bentley MicroStation. (Current workflow.)
- Engineer's seal to be placed on sheet files using MicroStation's Place Cell. (Current workflow.)
- Once plan sets are final, create PDFs of each sheet using MicroStation's PDF plot option.
- Engineer's to place digital signatures on PDF plan sheets using Adobe Professional's Digital Signature Tool.

# Digital Signatures

## Examples:



# Digital Signatures

## TxDOT Proposed Workflow: (cont.)

- Once all PDFs are created and digitally signed, create a PDF Package of plan set using Adobe Professional 8.0, or above.
- PDF Package to be submitted to TxDOT's Design Division for review and final approval.
- Once final design is approved by Design Division, plans to be submitted to General Services Division for inclusion in Plans Online.

# Digital Signatures

## Currently under Discussion:

- Digital Signatures
  - Sign Title Sheet only vs all sheets.
  - Process for multiple digital signatures.
- In-house plan submittal process options.
  - From within ProjectWise?
  - TxDOT Drop Box?
  - CD/DVD?
  - Shared Drive?
  - Email?



# Digital Signatures

## Currently under Discussion: (Cont.)

- Plan review process.
  - Redlines - electronic or paper?
  - Digital Signatures - apply prior to or after plan review?
  - The addition or removal of plan sheets in set?
- In-house digitally sealed/signed plan set pilot project.
- Statewide Implementation Plan
  - Training.
  - Documentation/support.
  - Timeline for going completely digital.

# Digital Signatures

## Down the Road:

- Consultant electronic plan submittal process.
  - Digital Signature validation.
  - TxDOT CADD Standards adherence.
  - TxDOT file format submittal adherence.
  - Plan set submissions
    - ProjectWise?
    - CD/DVD?
    - Portable Media Device?

# Digital Signatures

## Conclusion:

- TxDOT is still in the planning process of a total electronic solution for plan submittal.
- Great strides have been made towards this solution, but still have some work to do.
- In the end, TxDOT's dedication to this process will not only save time and money, but will also be a major benefit to the environment.

# Digital Signatures

Thank you!