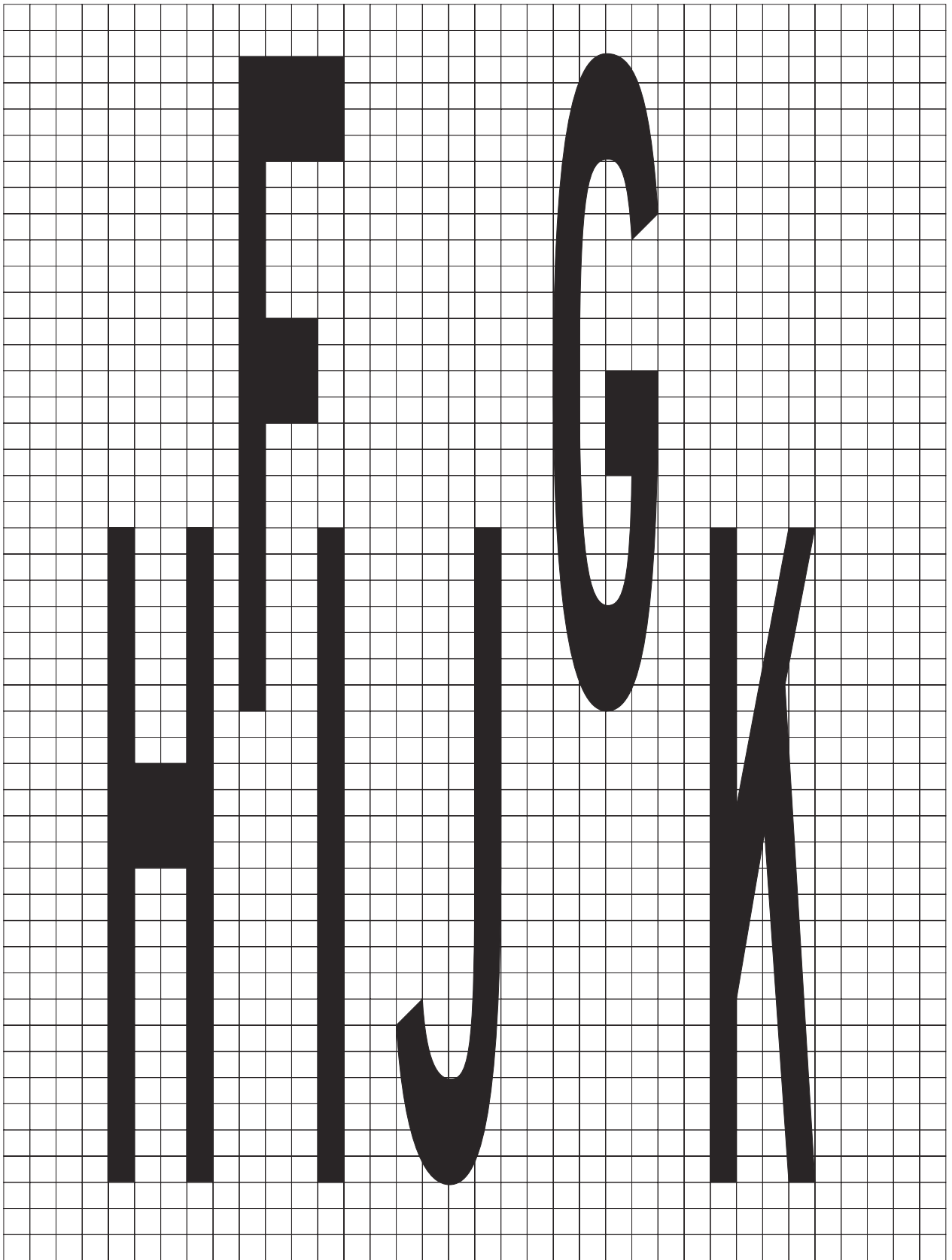
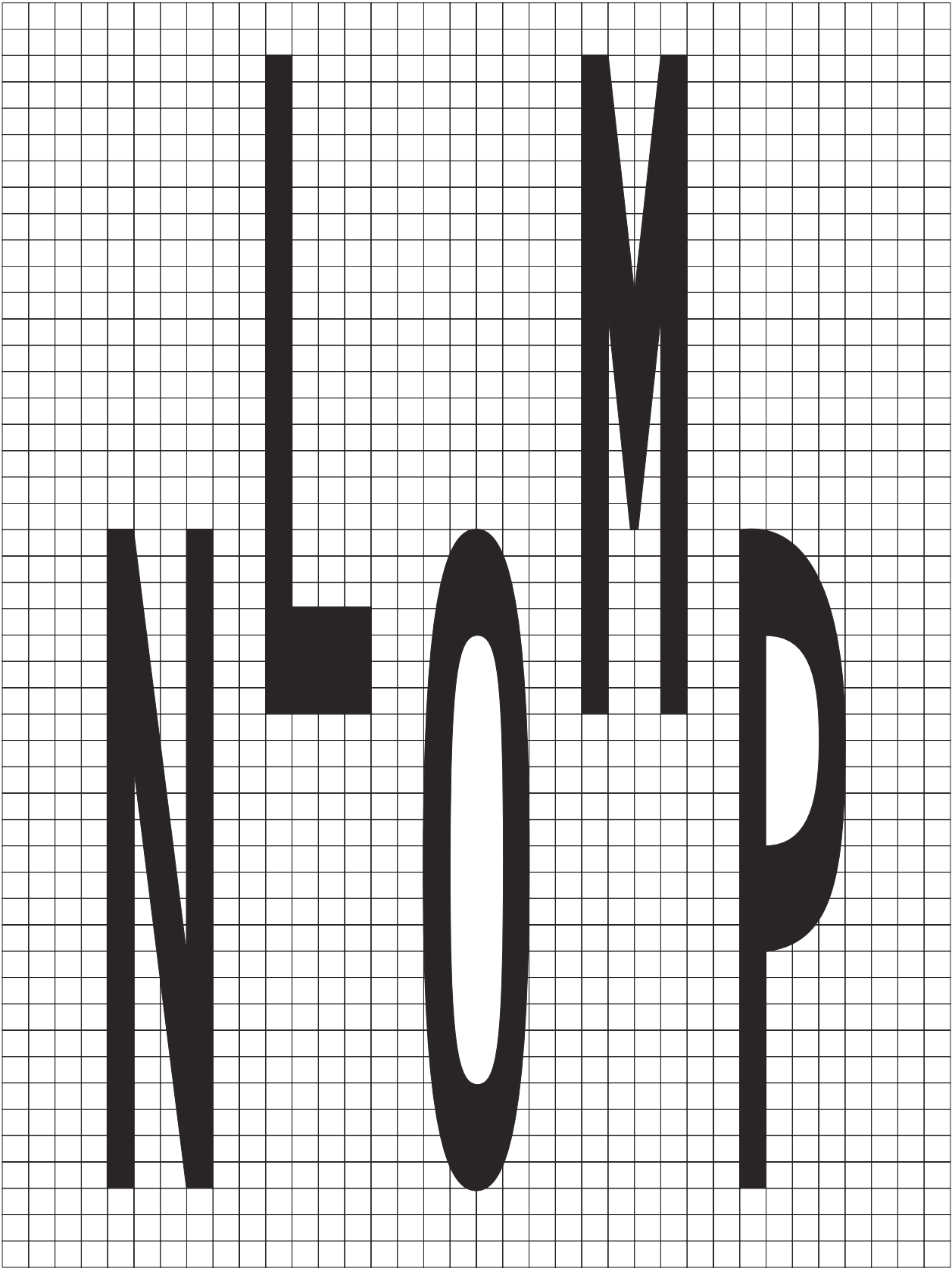
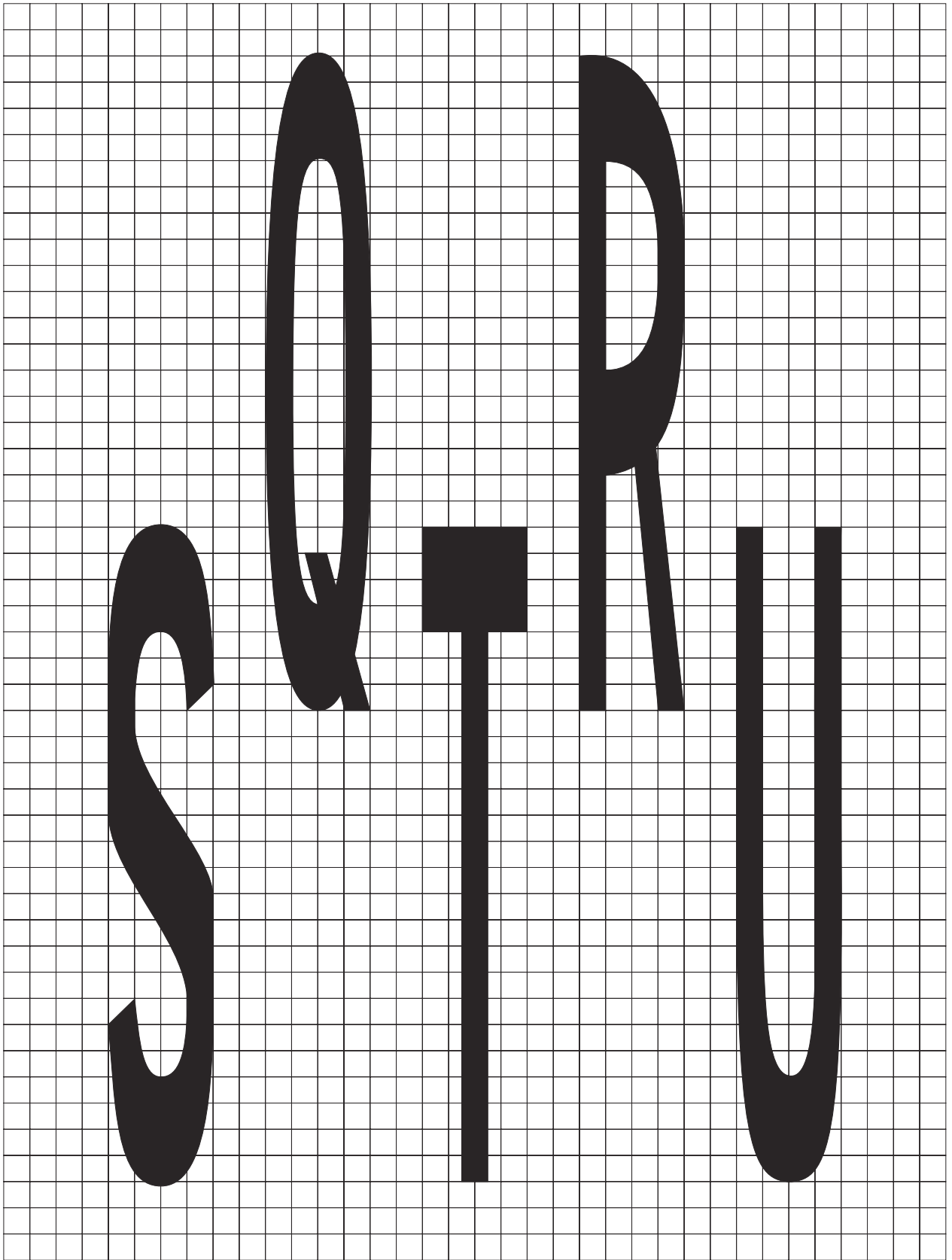
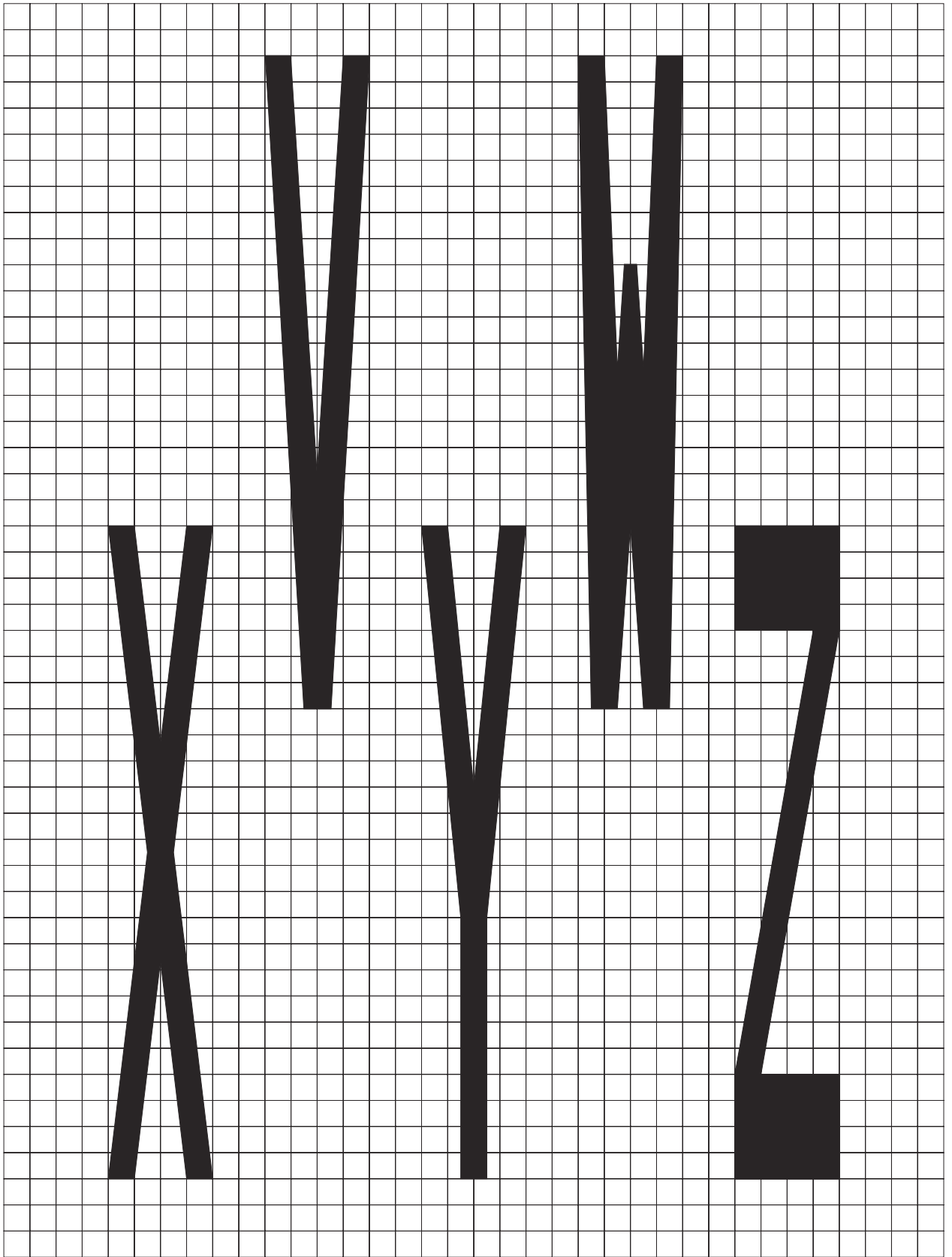


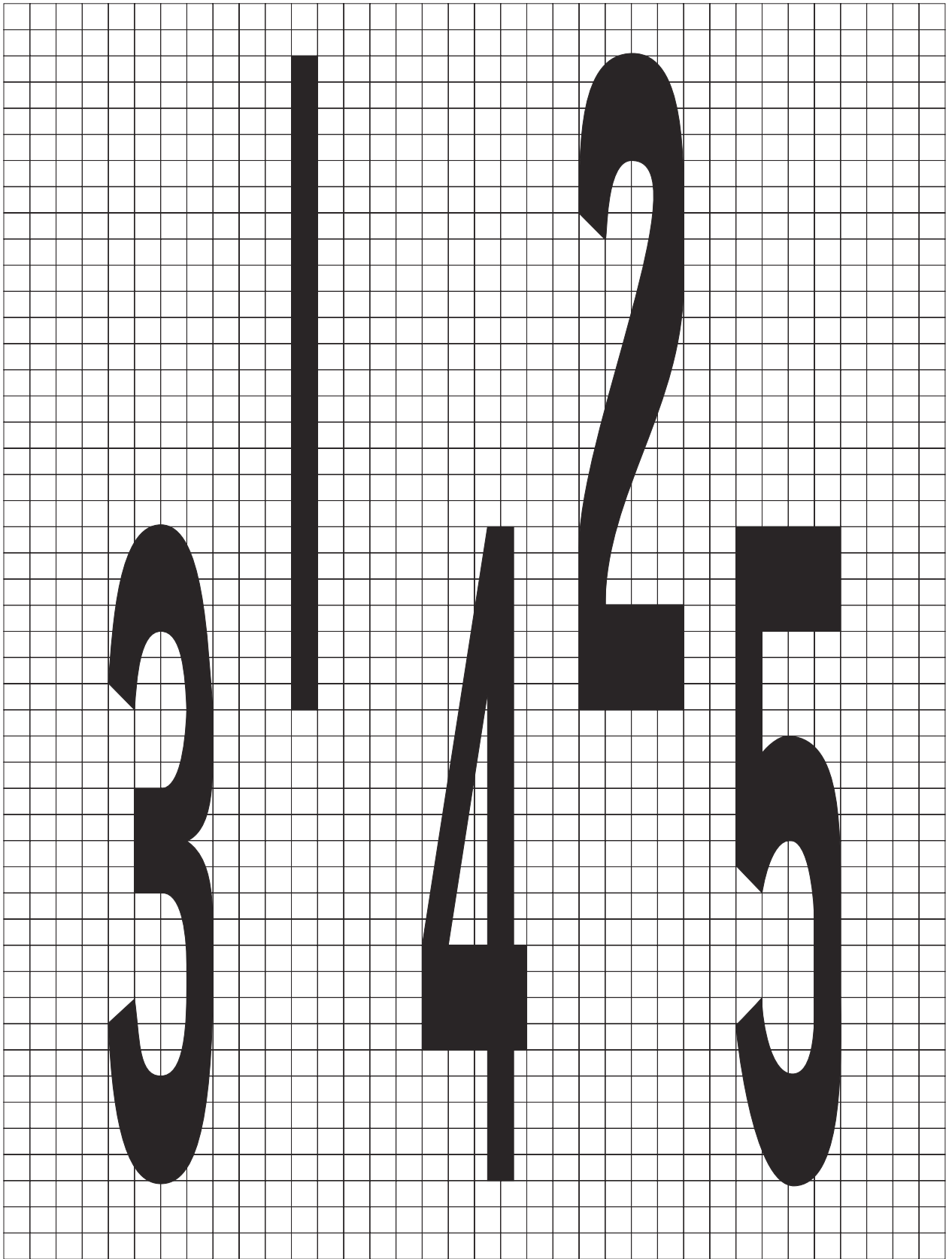
CADBE

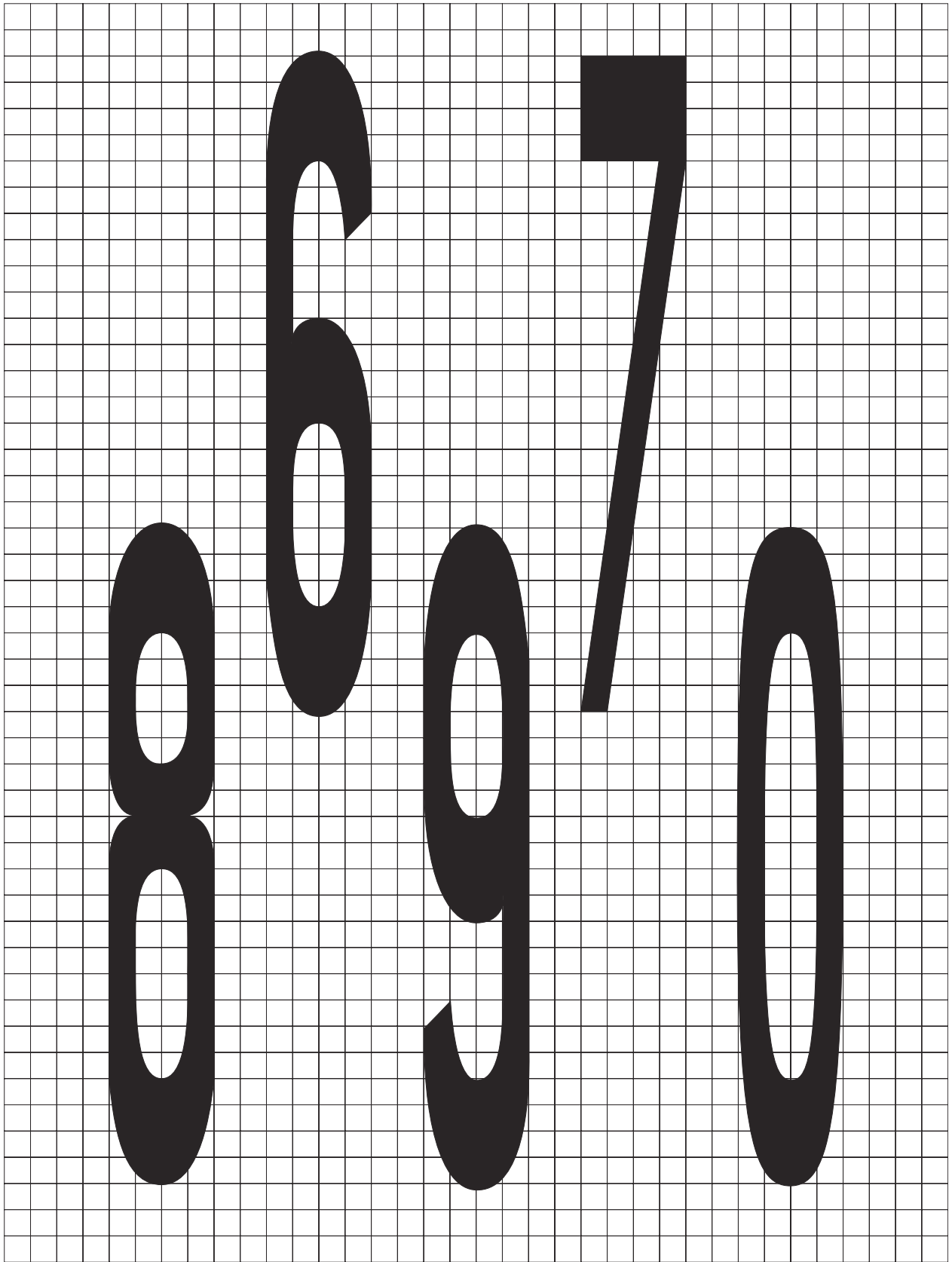


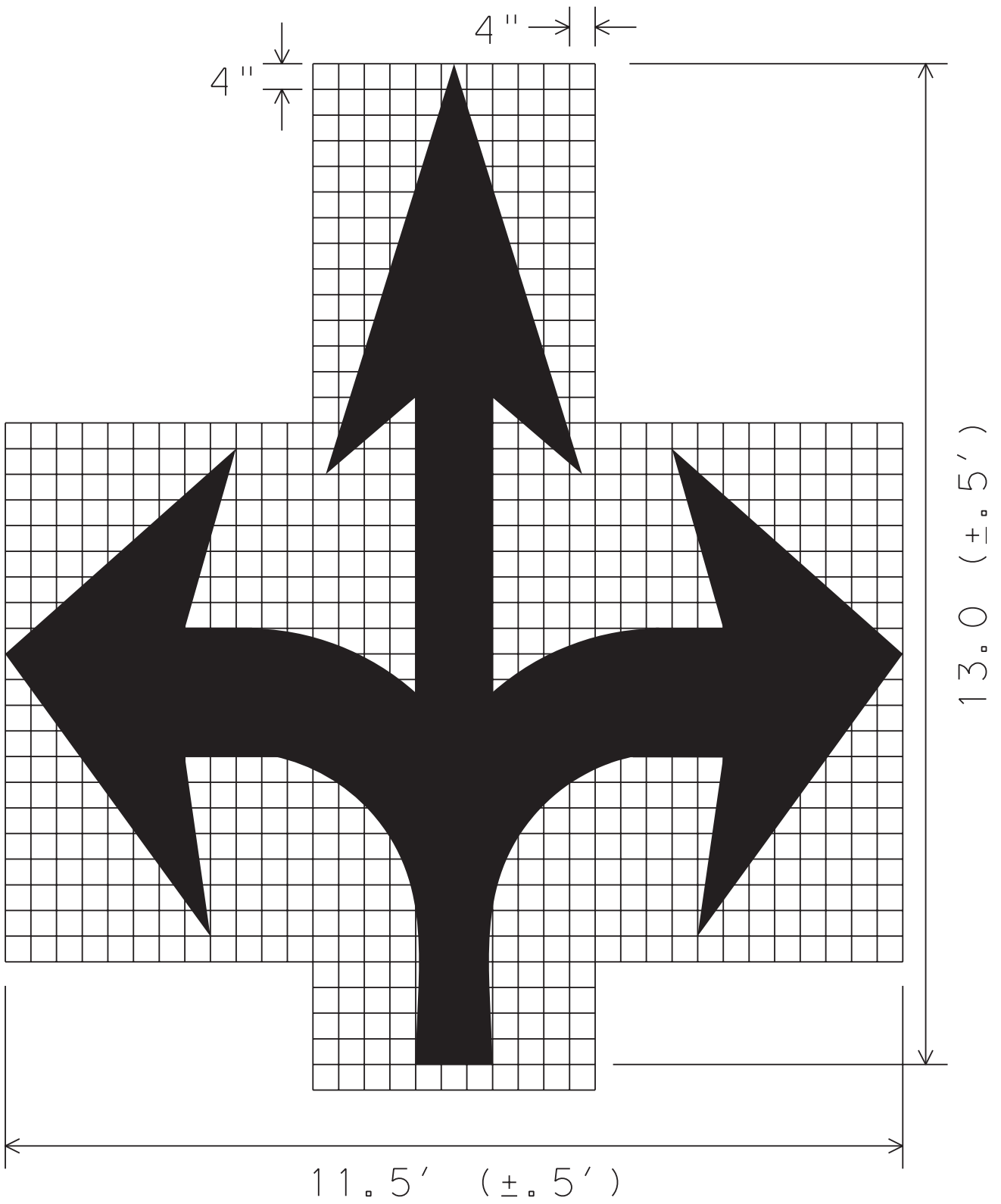


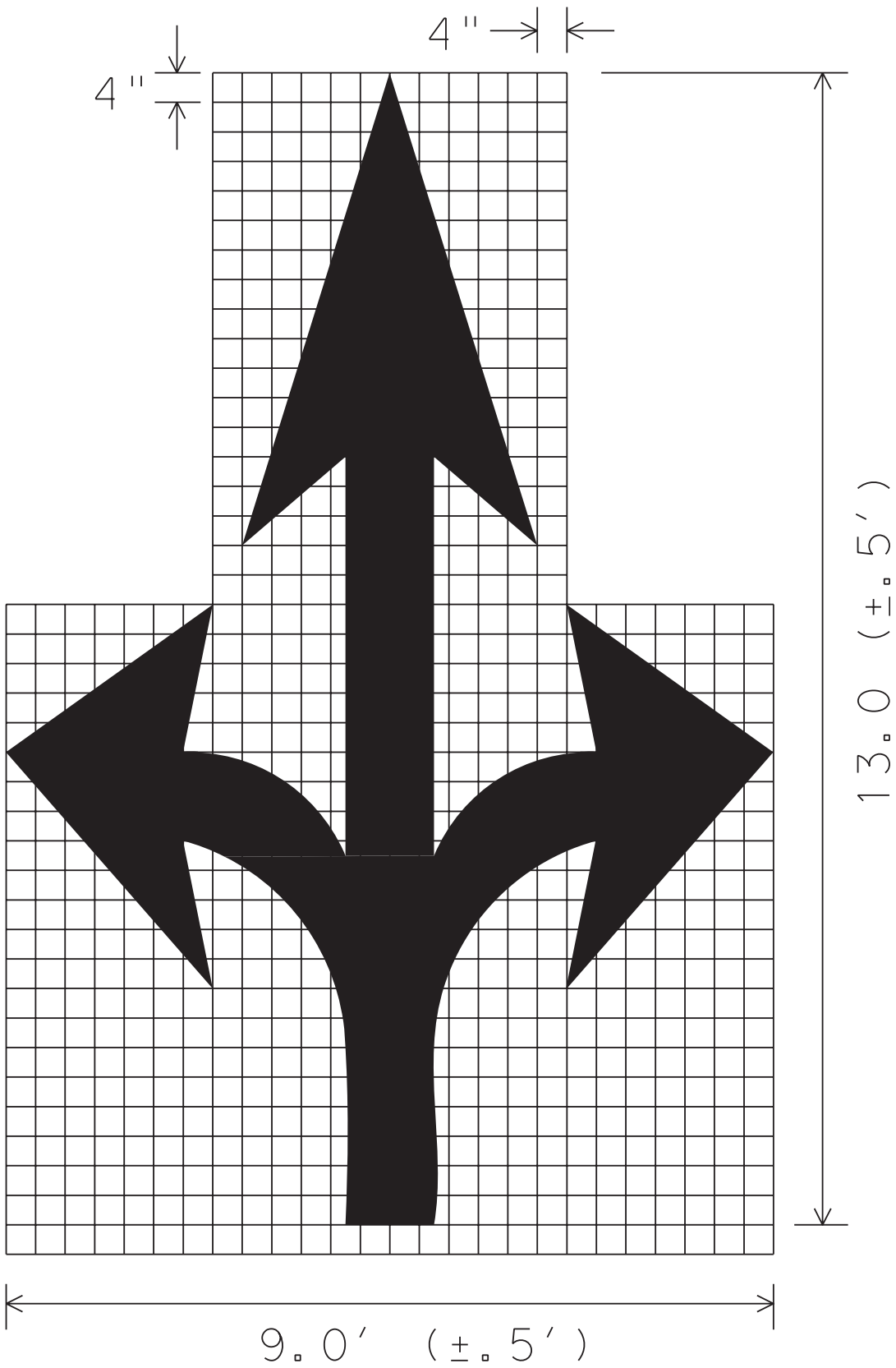


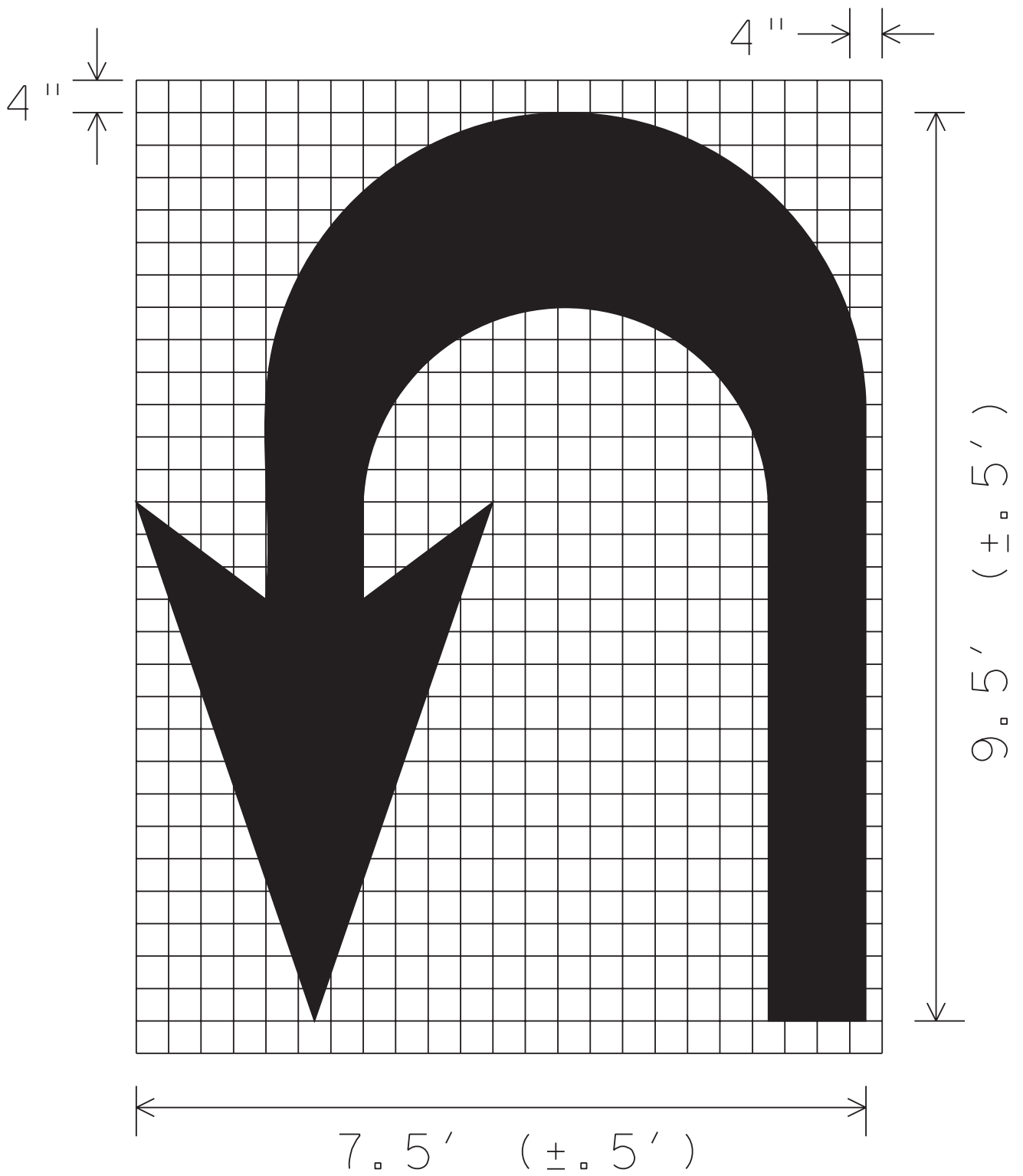


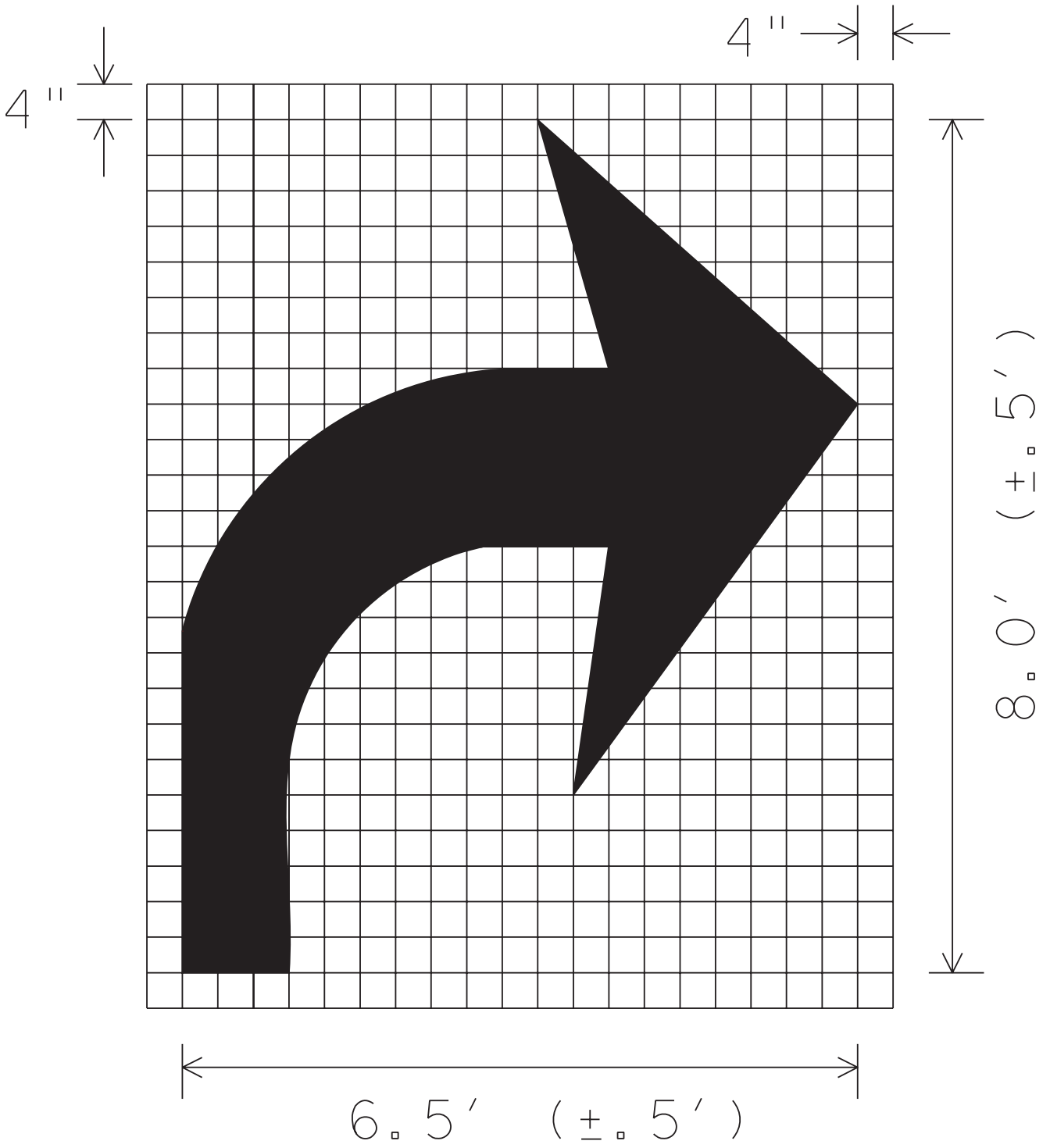


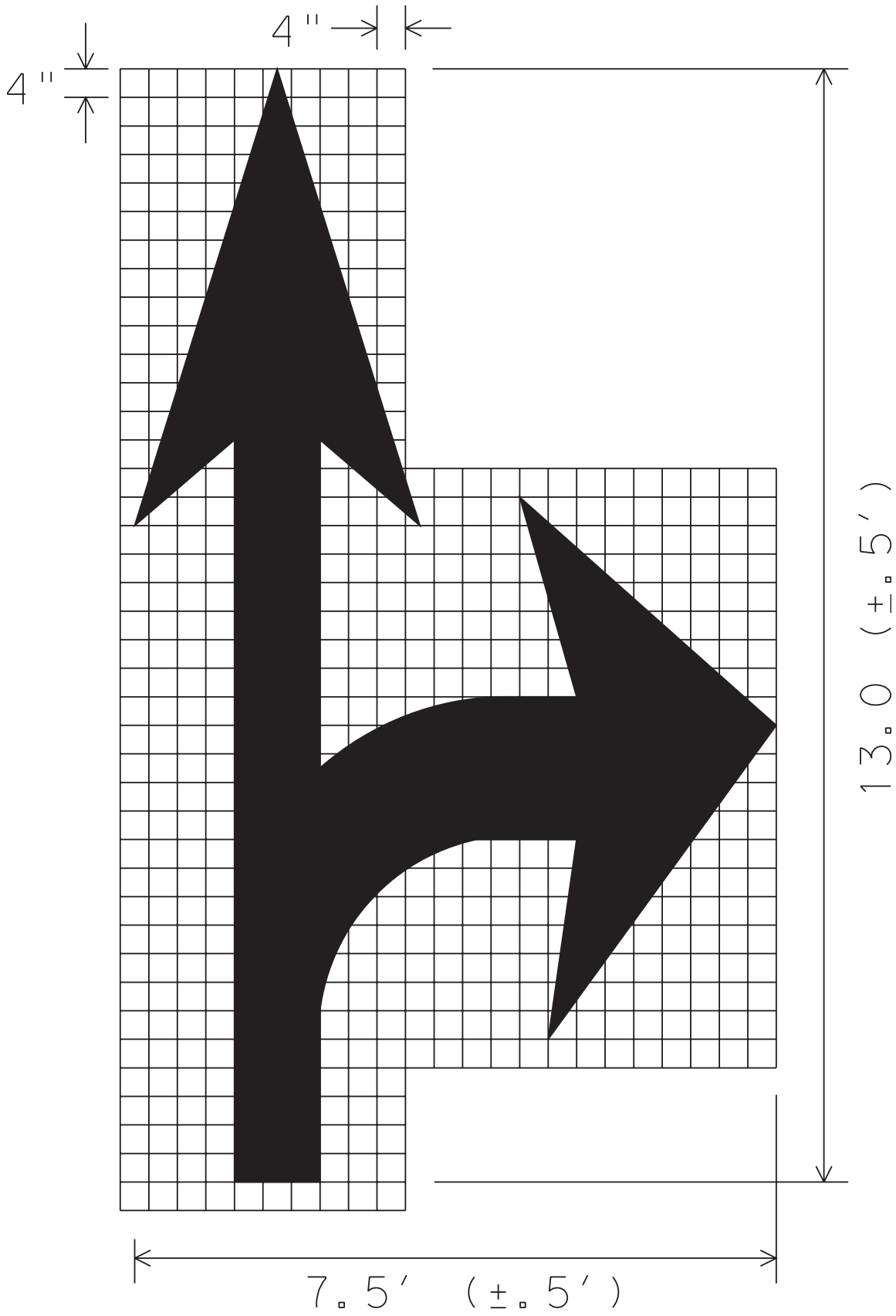


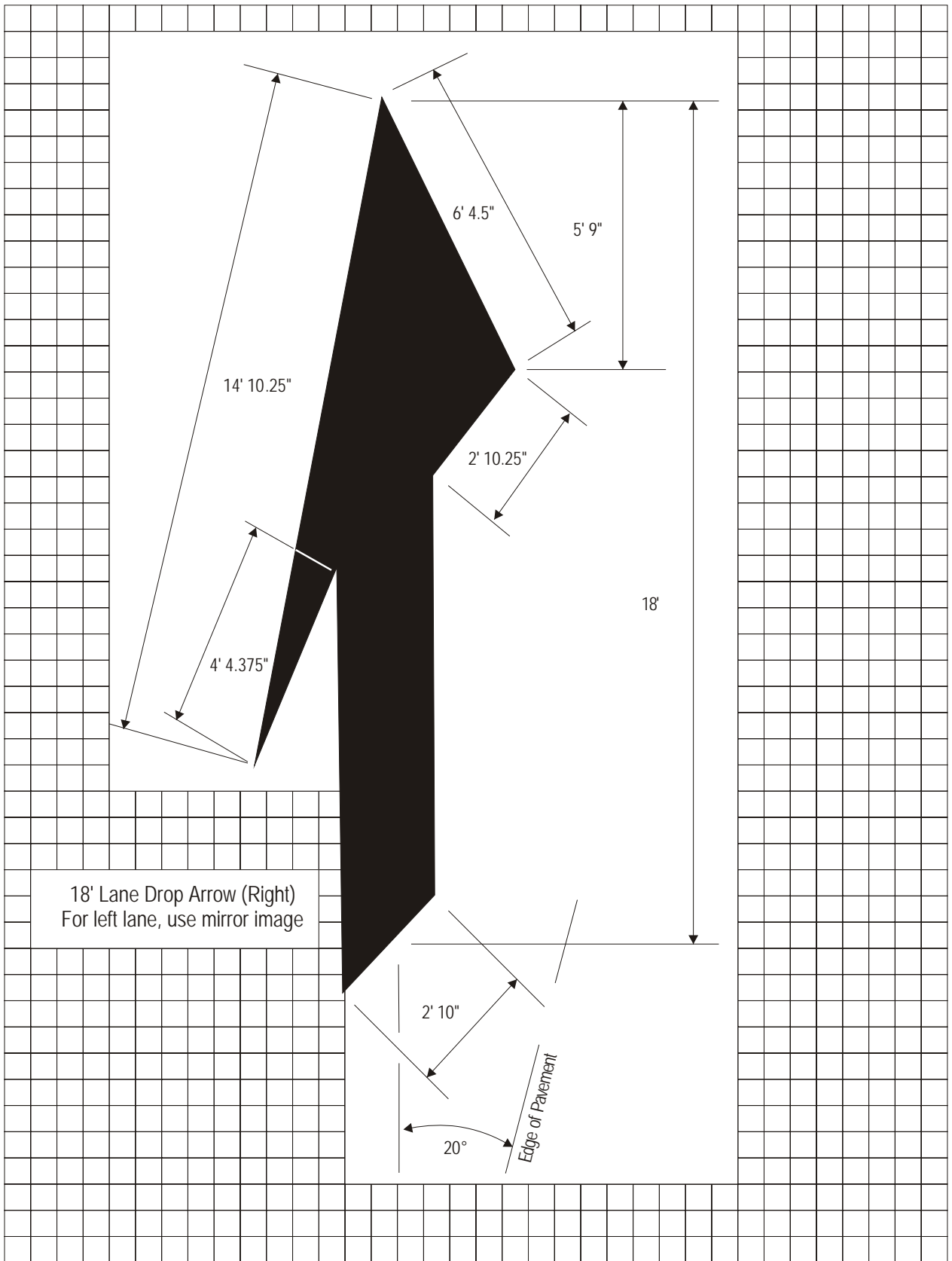




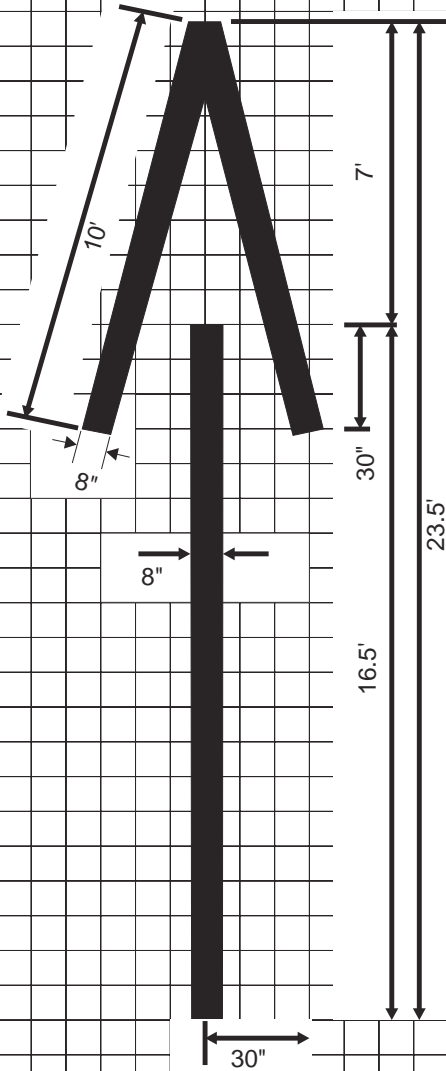




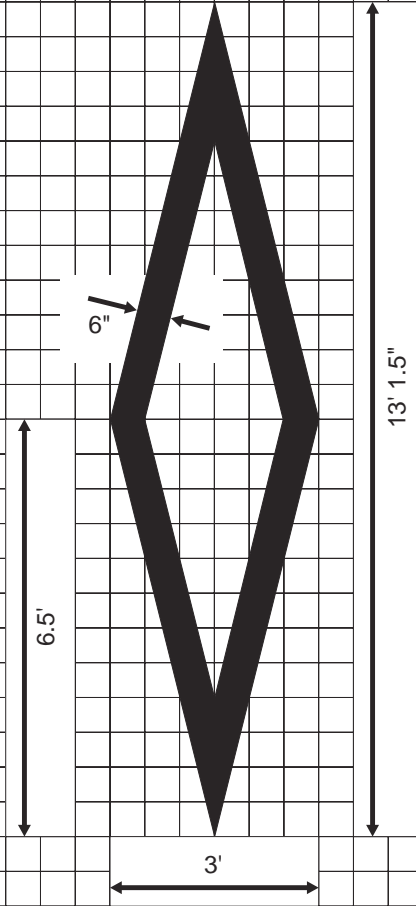


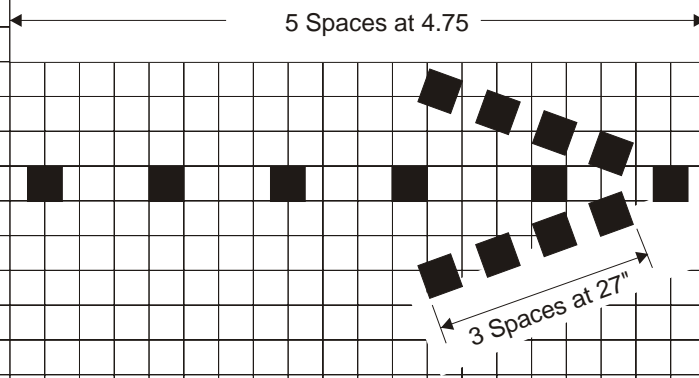
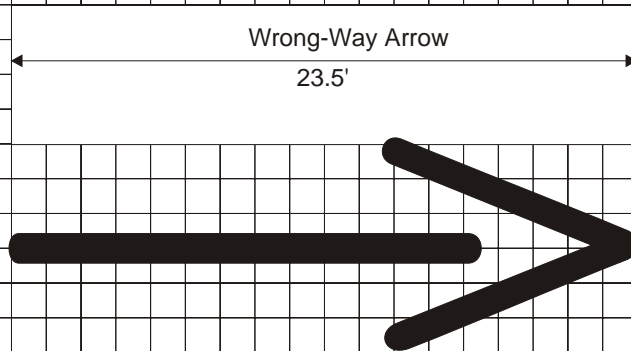


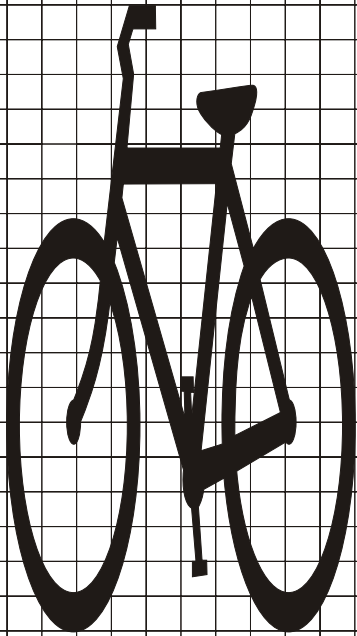
Freeway, Expressway and Ramp Pavement Arrow



Preferential Lane Symbol



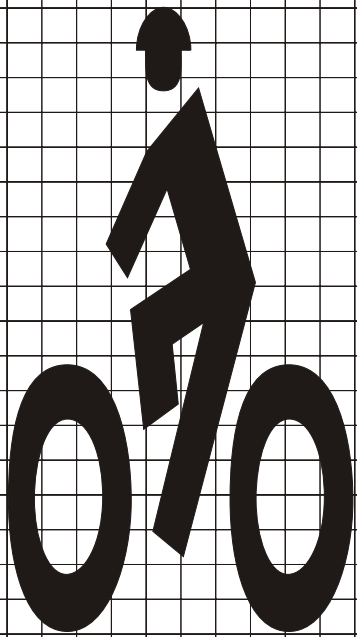




72"

LANE

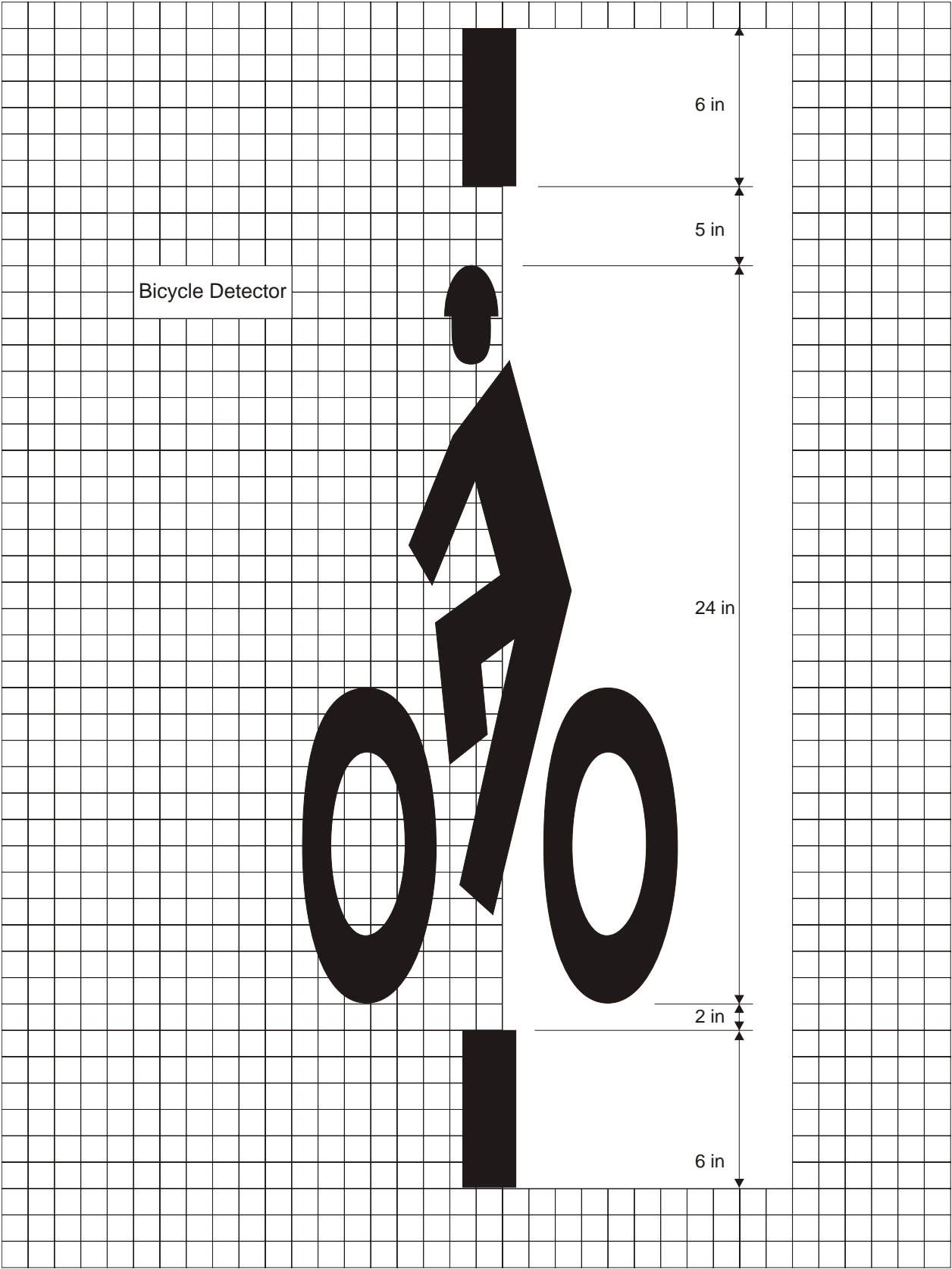
44"



72"

BIKE

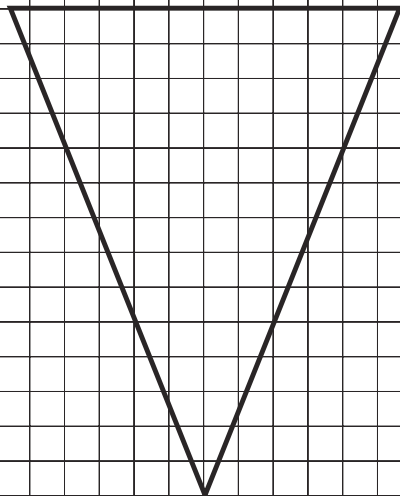
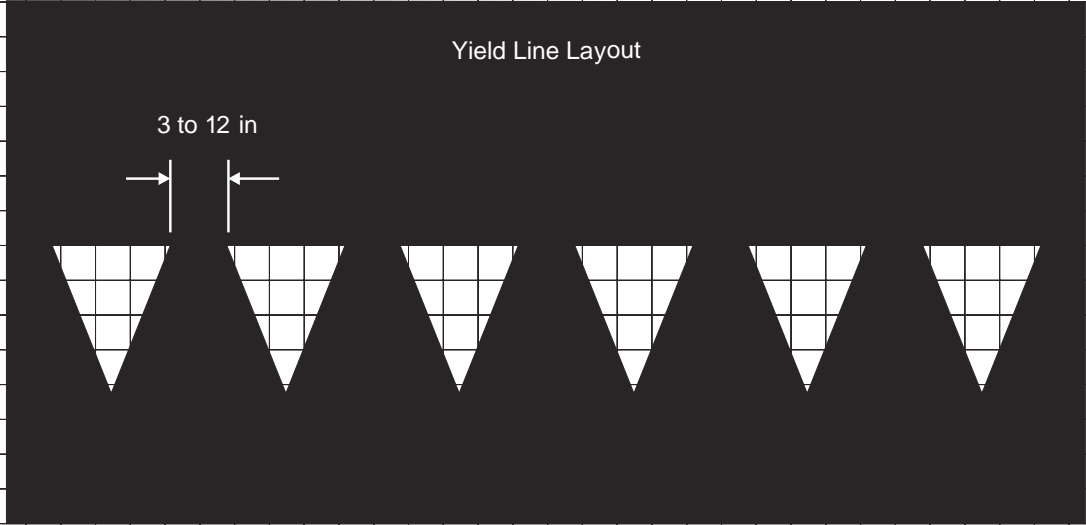
44"

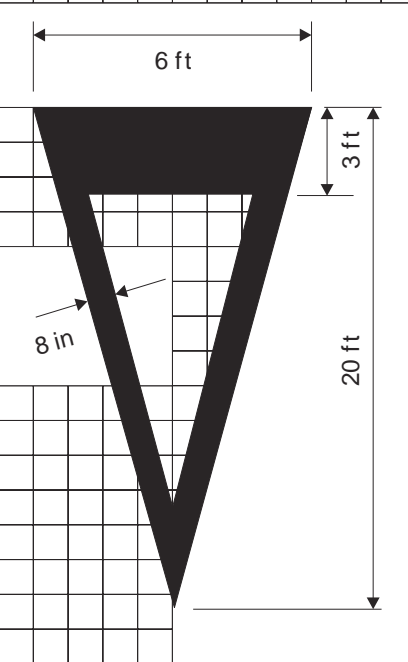


SCHOOL

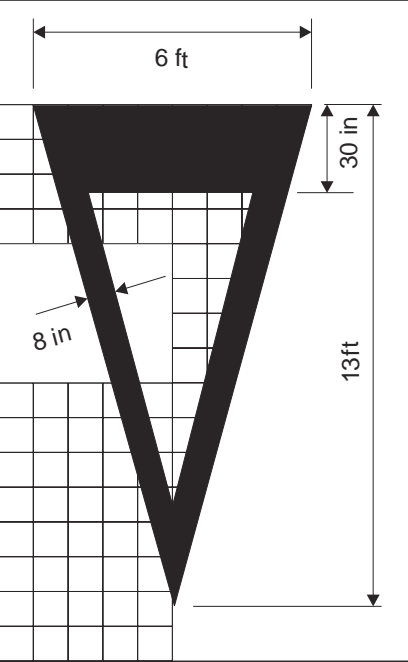
19.3'

10

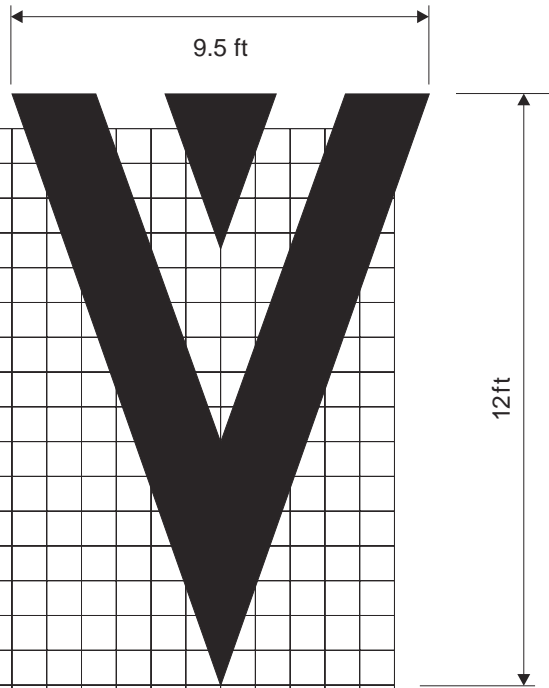
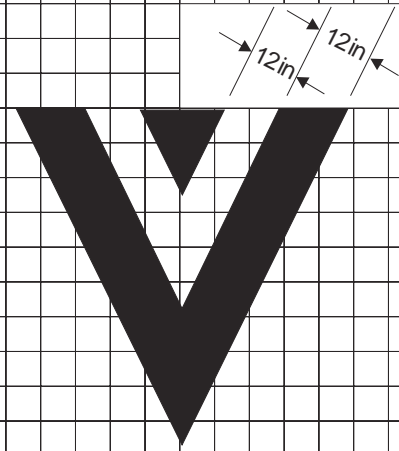
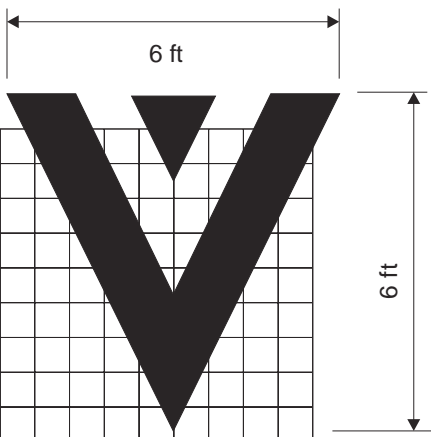


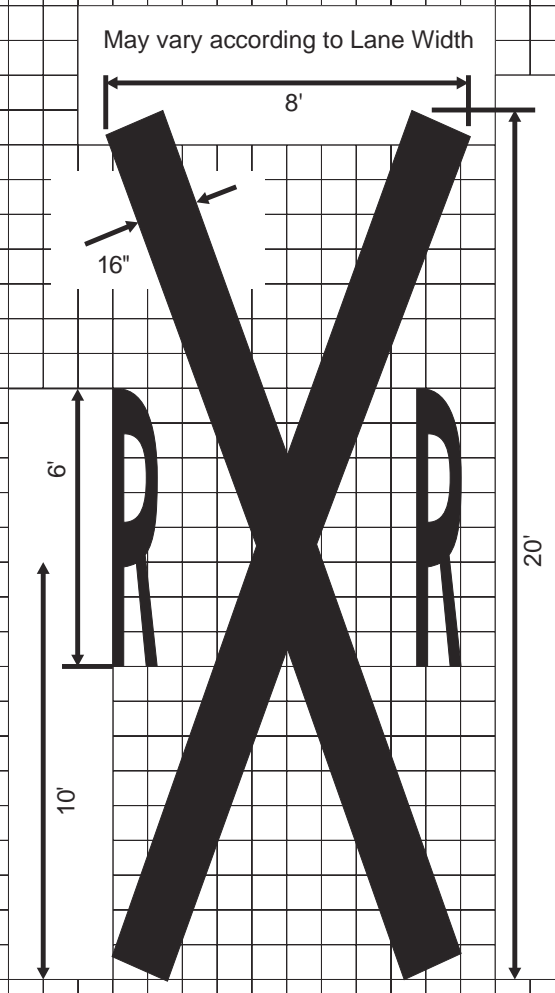


Yield Ahead Triangle

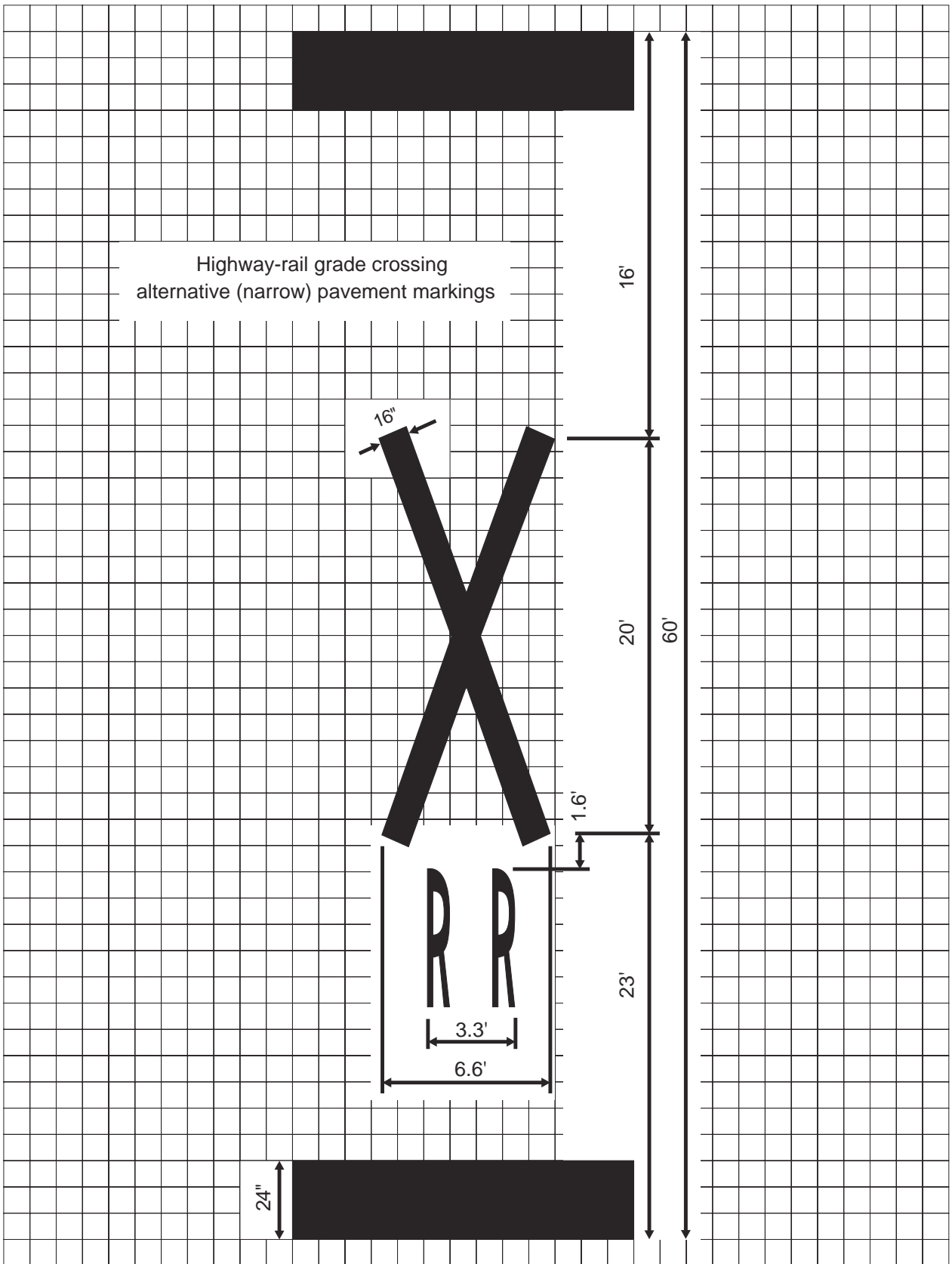


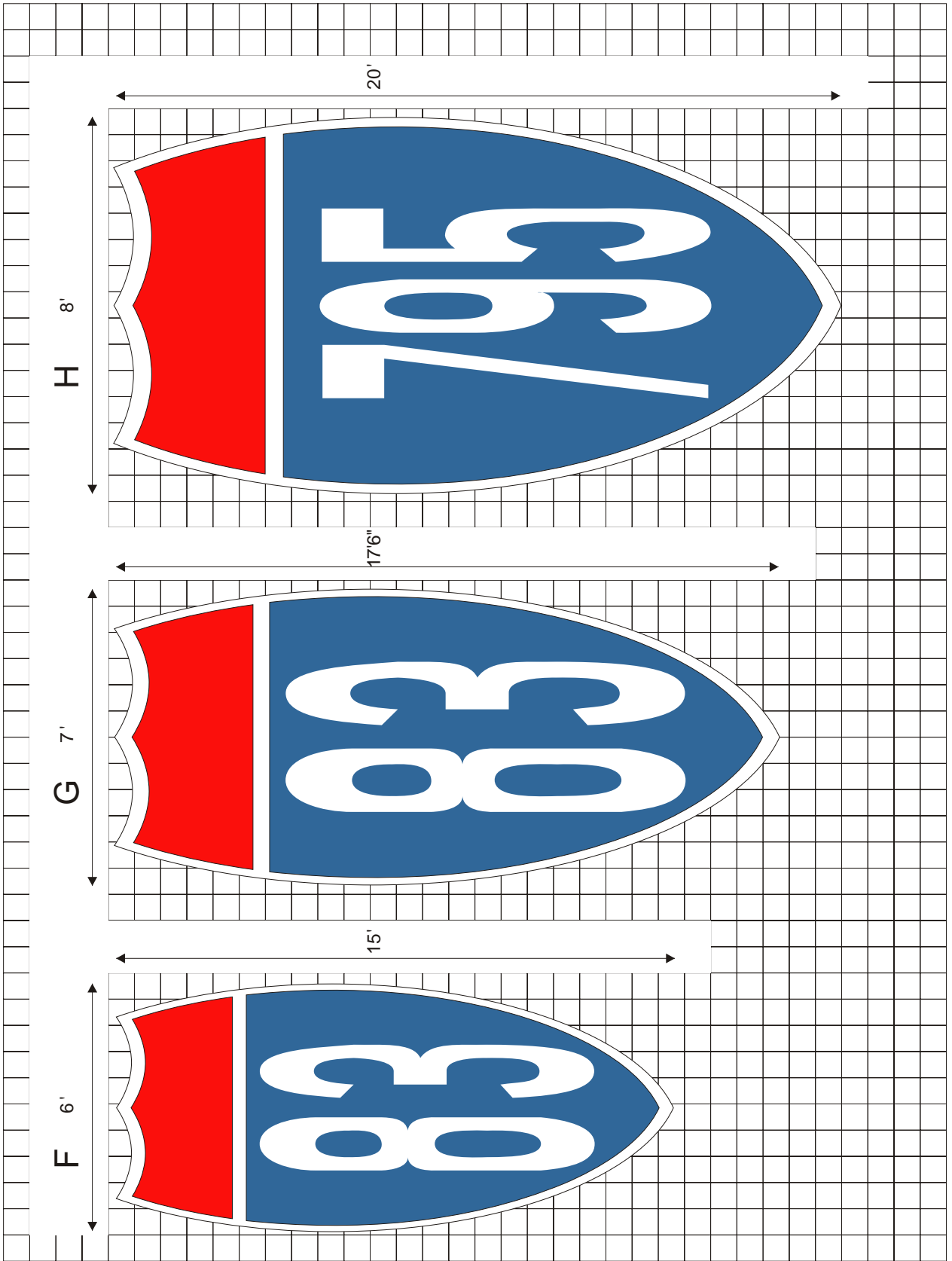
Speed Hump Markings





Railroad Crossing Symbol



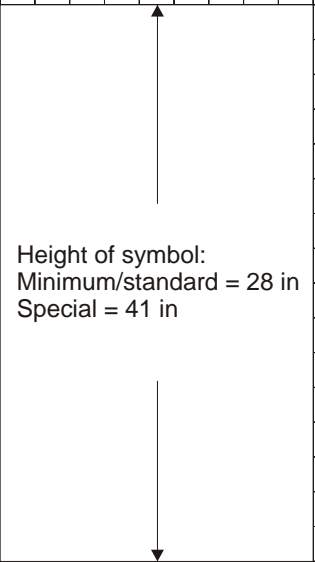


International Symbol of Accessibility Parking Space Marking
with Blue Background and White Border Options

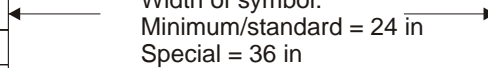


**

**



Height of symbol:
Minimum/standard = 28 in
Special = 41 in



Width of symbol:
Minimum/standard = 24 in
Special = 36 in

**Stroke width:
Minimum/standard = 3 in
Special = 4 in