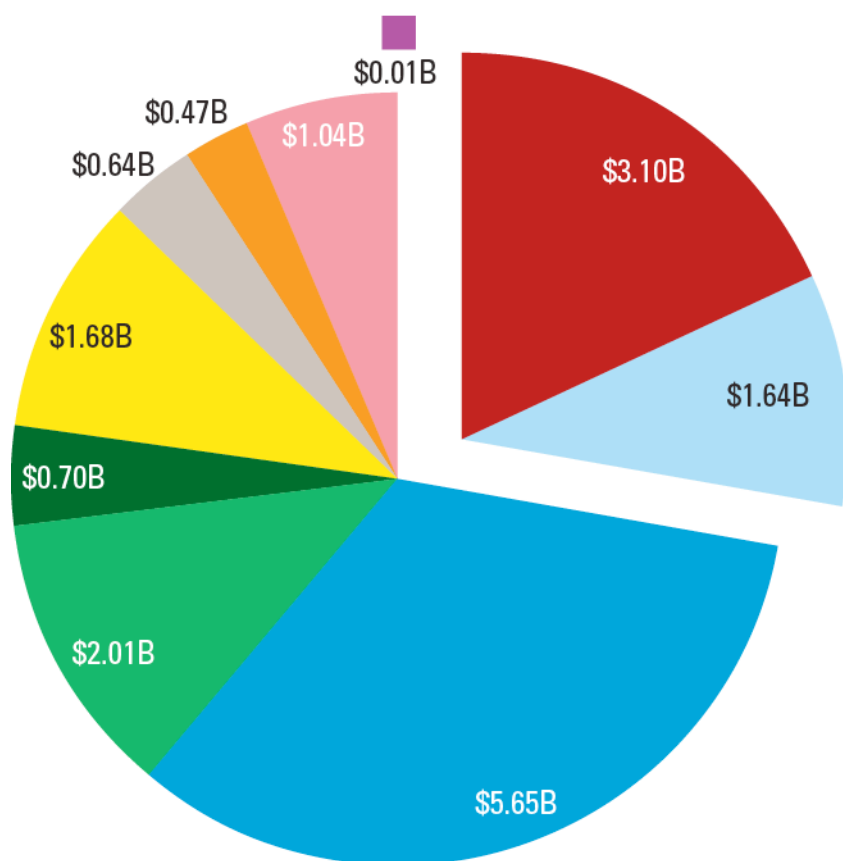


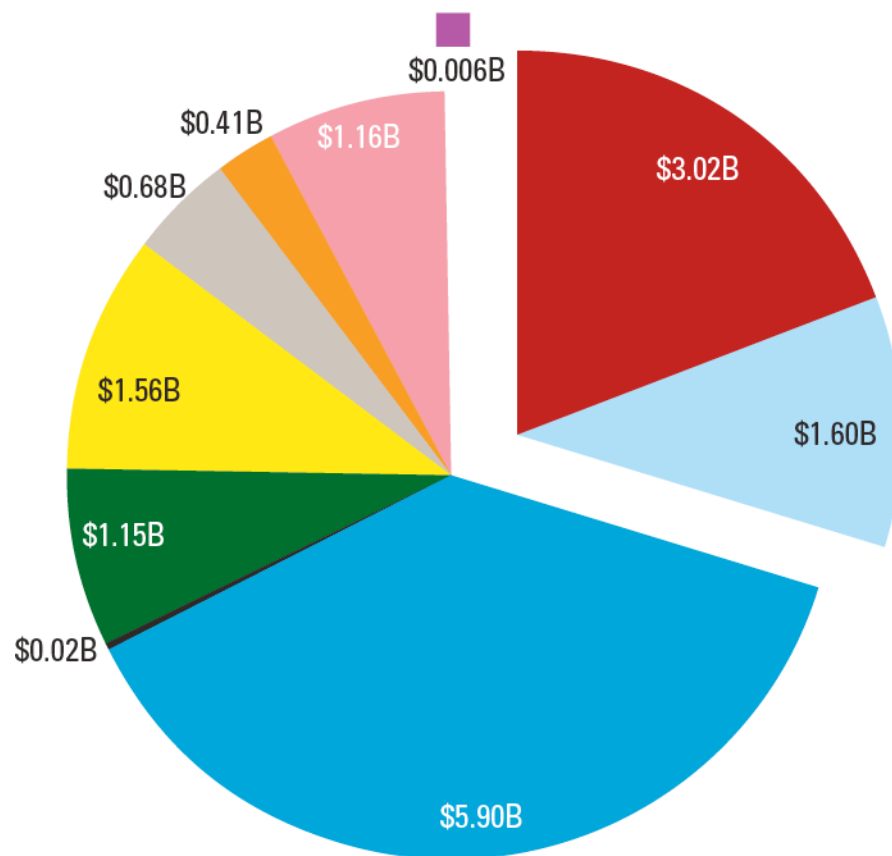
Texas Department of Transportation Budget for 2010-2011



* Includes \$1 billion for deposit to the State Infrastructure Bank.
Source: 2010-2011 General Appropriations Act, 81st Texas Legislature

Committed Projects that began prior to biennium	\$3.10B
Pay Back Borrowed Funds	\$1.64B
Subtotal	\$4.74B
Maintain and Replace Existing System	\$5.65B
New Projects from Borrowed funds (Prop 12 & 14)*	\$2.01B
New Construction from Cash	\$0.70B
Project Development Costs	\$1.68B
Other Modes and Services	\$0.64B
Aviation Services	\$0.18B
Public Transportation	\$0.18B
Traffic Safety	\$0.10B
Travel Information	\$0.04B
Rail Safety	\$0.002B
DMV functions in 2010	\$0.14B
Administration and Support	\$0.47B
Subtotal	\$15.89B
SH 121 Funds (Dallas Only)	\$1.04B
SH 130 Funds (Austin and San Antonio Only)	\$0.01B
TxDOT Grand Total	\$16.94B

Texas Department of Transportation Budget Request for 2012-2013




Source: TxDOT 2012-2013 Legislative Appropriations Baseline Request

Committed Projects that began prior to biennium	\$3.02B
Pay Back Borrowed Funds	\$1.73B
Total	\$4.75B
Maintain and Replace Existing System	\$5.90B
New Projects from Borrowed funds (Prop 12 & 14)	\$0.02B
New Construction from Cash	\$1.15B
Project Development Costs	\$1.56B
Other Modes and Services	\$0.68B
Aviation Services	\$0.19B
Public Transportation	\$0.19B
Traffic Safety	\$0.14B
Travel Information	\$0.04B
Rail	\$0.12B
Administration and Support	\$0.41B
Total	\$14.47B
SH 121 Funds (Dallas Only)	\$1.16B
SH 130 Funds (Austin and San Antonio Only)	\$0.006B
TxDOT Grand Total	\$15.63B

Gas Tax Facts

Texas Transportation and
Your Fuel Tax Dollars

How much do I pay?

Our state gas tax is 20¢ per gallon. The average driver pays \$9.52 a month in state fuel taxes. Of this, a nickel  goes to public education. The monthly net to the highway fund is \$7.14 a month. This assumes your vehicle gets 21 miles to the gallon and you drive 12,000 miles a year.

There is an additional 18.4¢ a gallon collected by the federal government.

**My truck doesn't get that good of mileage.
I get 16 miles to the gallon.**

Then you are paying about \$12.50 a month in state fuel taxes...\$9.38 to the highway fund.



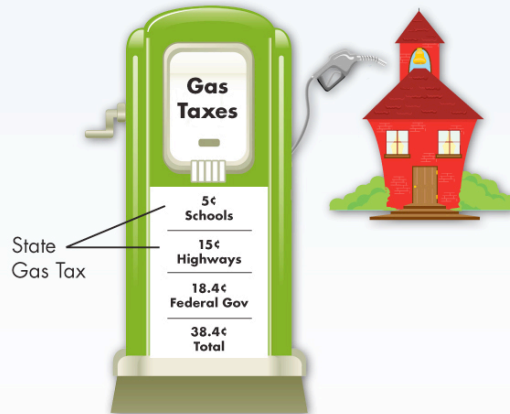
\$7.14

2009 Honda CRV — \$7.14
21 miles per gallon
1,000 miles driven per month
\$18.29 in state and federal fuel
taxes paid per month



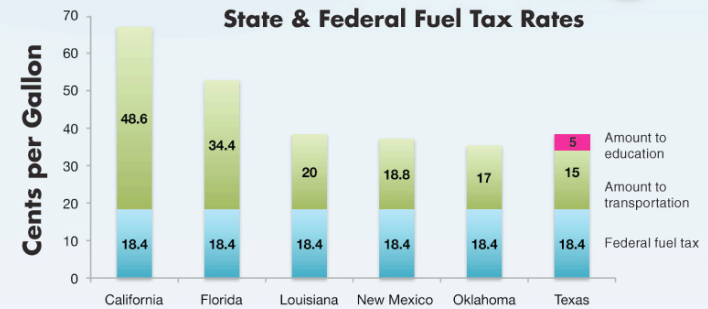
\$9.38

2009 Ford F-150 — \$9.38
16 miles per gallon
1,000 miles driven per month
\$24 in state and federal fuel taxes
paid per month



...seems pretty low!

**What do other states
comparable to Texas
collect in fuel taxes?**



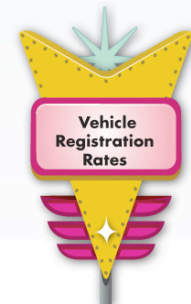
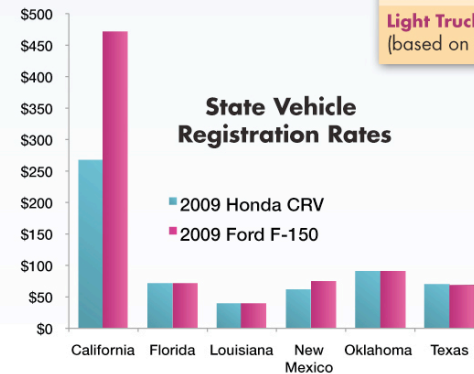
**What else do I pay for in the
form of fees or taxes that go
to transportation?**

Texas Motor Vehicle Registration Fees

Passenger Vehicles:

2008 and Newer Models	\$58.80
2005, 2006 and 2007 Models	\$50.80
2004 and Older Models	\$40.80

Light Trucks \$54.00 average
(based on weight)



Other monthly household expenses compared to fuel tax payments

Utilities \$265

(includes gas, electricity, wastewater and garbage collection)

Eating Out \$218

Vehicle Liability Insurance \$98

Cable/Internet Service \$97

Vehicle Maintenance and Repairs \$54

Cell Phone Service \$51

Gym Membership \$40

State Fuel Taxes \$10 Federal Fuel Taxes \$9

Sources of State Highway Fund Revenue

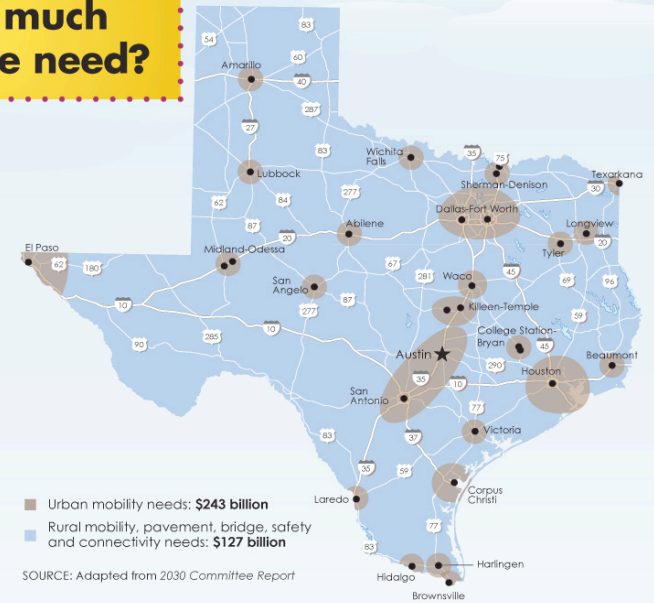
FY 2010
(in \$ thousands)

State Motor Fuels Tax	\$2,285,491
Federal Allocations	\$3,235,019
Motor Vehicle Lubricant Sales Tax	\$40,356
Motor Vehicle Title Certificate Fees	\$26,394
Motor Vehicle Registration Fees	\$1,105,432
Special Vehicle Registration Fees	\$58,661
Supplies, Equipment and Services	\$157,033
Interest on State Deposits	\$73,788
Other Revenue	\$67,914
TOTAL	\$6,960,088

How much do we need?

Estimated Needs for Construction and Maintenance

This map is a visual depiction of statewide transportation funding needs through 2035 as adapted from the 2030 Committee Report.



What does it cost to build?



Freeway Interchange
\$250 million



Overpass
\$5.8 million per lane mile



Freeway Widening
\$6.1 million per lane mile

Provided to you by the House Committee on Transportation, with information from the Texas Transportation Institute.