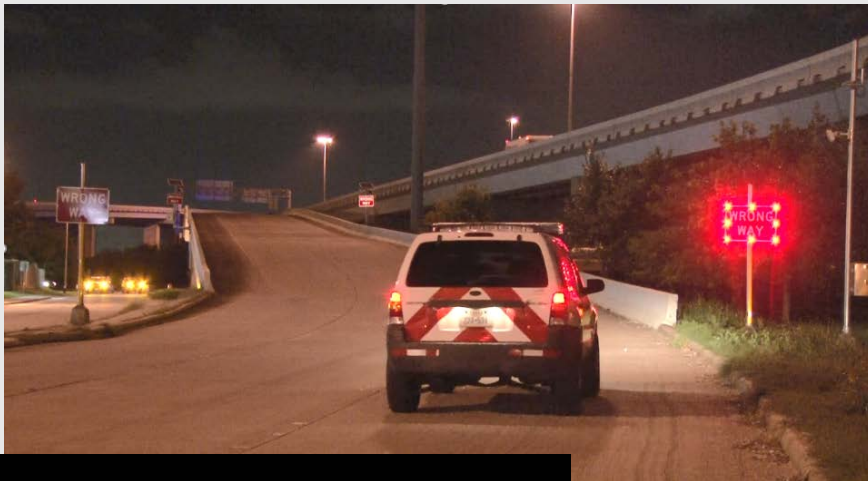


District Transportation Technology

Near term advancements



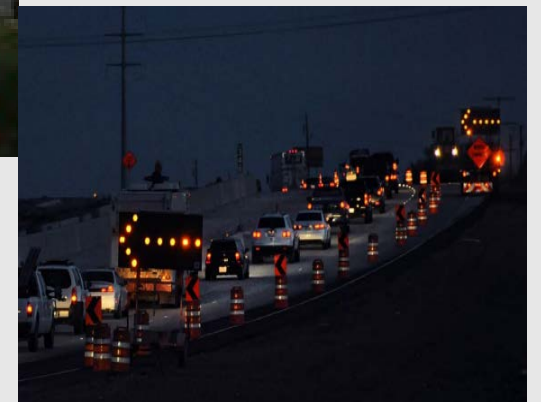
Wrong Way Driving - Monitored LED Sign Installation



WRONG WAY DRIVER REPORTED

USE EXTREME CAUTION

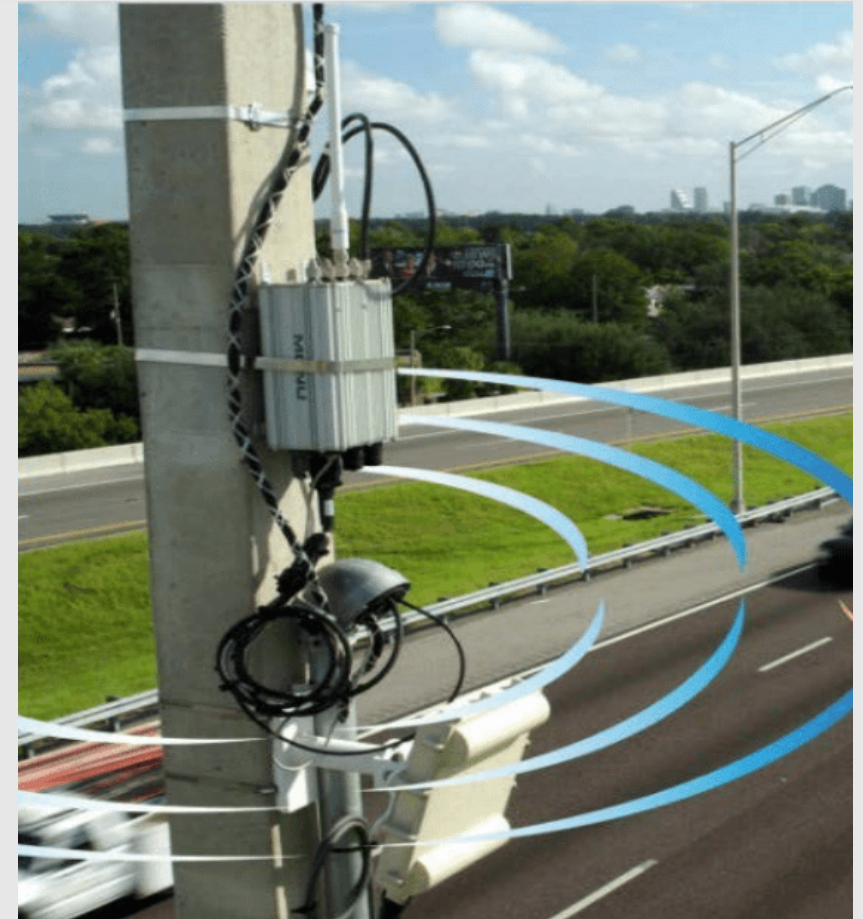
Smart Work Zones provide real time information benefits to the traveling public, to the work crews on site, and the agencies responsible for the construction project.



SPaT (Signal Phasing and Timing) - Connected Vehicles



SPaT provides current signal state, and how long until it changes. It may also provide geometry or design of the intersection. It can be displayed in the vehicle.



Freeway Traffic Responsive System



Sensors monitor both direction of freeway conditions
Contact information send to intersections
Activate alternative signal timing plans for frontage road

